



The

Bugle



**A chance to blow your trumpet for the villagers of
Alport, Middleton and Youlgrave**

No.4

May 1998

Well, well, well . . .

Here we are again, delivered direct to your door, thanks to our many sponsors. As well as the commercial sponsorship, we welcome the individual contributions we have received, thank you very much.

Well-dressing gets under way this month, starting at Middleton Saturday 23rd and Youlgrave Well-dressing starting Saturday 20th June. Don't miss the fun day out at Middleton's Village Market Saturday 23rd May with something for all the family.

You can pick up a bargain at one of the many stalls, try your luck at 'milking the cow', skittles or the raffle and finish off with a hotdog. Wonderful home-made teas are served in the Village Hall where an exhibition of pictures by Middleton Artists will be on sale. The Gallery at

Hunters End will be open too. A visit to the beautiful garden at Rock Cottage is not to be missed.

Youlgrave Youth Hostel is drawing to the end of an extensive makeover so we wish them every success as they open for their new season. It is satisfying to see such a handsome building providing a base for all types of visitors to enjoy our countryside.

Please keep the interesting local snippets, stories and opinions coming in. How are your sporting organisations going on? Let us know and we will keep everybody posted! This is **YOUR FREE** Newsletter.



YOULGRAVE PLAYGROUP UNDER THREAT

By Andrew Mcloy

Less than a year after Project Lever identified decent childcare provision as being an important part of Youlgrave's social fabric, the village playgroup is facing serious difficulties.

Since Christmas a number of children have moved from the playgroup into the village school, and the sudden decrease in numbers has meant a serious depletion in what were already precarious funds. At the moment the playgroup meets for two and a half hours every Wednesday and Friday mornings, but from September of this year it will be cut back to just one morning. Prices per session are having to go up in order to meet the ongoing overheads, which are chiefly the cost of hiring the village hall and paying the qualified

organiser. The latter continues to be ably supported by a small band of volunteering parents, but of course there are obvious limits to parents' time.

With the prospect of more children making the progression from playgroup to school later in the year - and, crucially, few toddlers coming through to fill their places - the playgroup may be in terminal decline unless more funds can be found. Already we are close to the minimum number of children needed to keep the playgroup financially viable (based on a reasonable fee per person), but how much further can it go before the playgroup folds altogether?

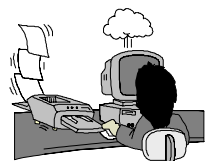
Do you have any bright ideas for fundraising? Should the parish council or village hall committee perhaps look on the playgroup's plight with more sympathy and offer some sort of financial assistance? Any helpful comments, your views or useful suggestions will be most welcome.

Please contact Sarah Brocklehurst on Matlock 583800 (after 6pm).

Published by Bugle Publications. **Editor** Emma Youatt, Square House, Middleton by Youlgrave, Bakewell, Derbyshire. DE45 1LS. Phone/Fax **01629 636241**, e-mail EYouatt@AOL.com

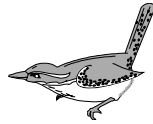
Printed by **Reprint** Bradford Road, Youlgrave 636410 as a community service free of charge.

Contributions to arrive by the 17th each month to Square House or to The Post Office



Dave Axon - Independent Dorling Kindersley Advisor

Valpo View



I tried to fill in the recent "Transport Needs Survey in Youlgrave". In the end I decided it was meant for those without easy access to a car, but then I started thinking.

I have a car. How else do I shop, work and socialise when I have friends who live in, amongst other places, Ashbourne, Edale and Wirksworth, and my work is scattered. Once having invested in the purchase price of a car I need insurance, road tax, services, MOT, fuel etc. There is then no spare cash left for the other forms of transport however much I might approve of the idea. Would it be better to encourage us all to use public transport rather than discourage us by putting up fuel prices which penalise the poorest and remotest?

At the moment empty buses lead to falling services and the economic "catch 22" becomes more marked. Soon there will be no buses and the environmentally sound option will be withdrawn, as were the trains with Dr Beeching.

I know someone whose principles will only allow him to travel on public transport. This rule extends to his wife and small children, and, as a result, their lives are circumscribed. It seems to be a case of either/or where car versus bus or train is concerned.

Could we challenge the powers-that-be to address our real transport needs? I would be happy to try to use public transport if it were more attractive as an option. How often have you seen cold, wet people huddled in the doorway of the George until the bus comes? Few shelters and poor timing are severe disincentives. Getting directly to the railway stations at

Chesterfield or Matlock offers a challenge, and visiting the hospitals in Chesterfield or Darley Dale is much more convenient by car in spite of parking. And what about awkward shopping, heavy luggage and the like?

What could be done? All forms of public transport could be co-ordinated with bus and train timing more efficient. We need to be seen not as "customers" or "them", but as "people" and "us". Deliveries and door to door services can be encouraged. We can take responsibility too by caring for the bus shelters and facilities provided, and standing up to those who do not.

Fewer cars cluttering up the village and lanes would benefit the landscape as well as cause less pollution, so I also need to work on my own mind set. Public transport should not be an either/or option, but a both/and addition to car travel.

And finally... big stores now have loyalty cards, why shouldn't public transport? Each time one travelled on a bus or a train the card could be marked towards a discount on the road fund tax. How about £1 off for every £10 spent on public transport? That would be a real incentive to change, wouldn't it?

Jeniwren

Middleton, Alport and Youlgrave

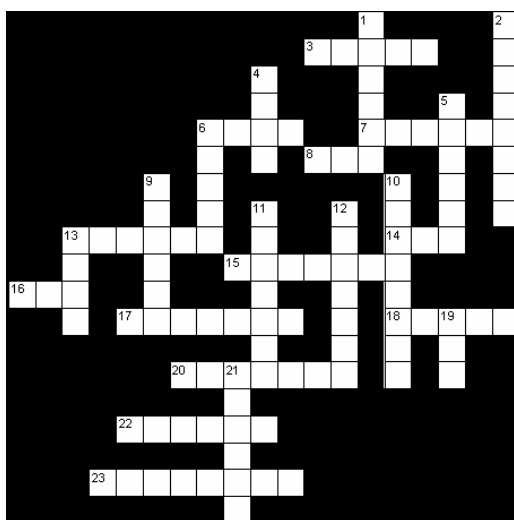
Why do these villages, whose initials stand for **MAY**,
Have a newsletter called Bugle, and no-one has to pay?
Because they lie so **B**right **U**nder **G**reen **L**imestone **E**dges,
Wth **Q**ueen **A**nne's lace and **C**ranesbill in their hedges,
And summers rich with the smell of hay.

M D



Neighbourhood Watch Coffee Morning
Granby House, Youlgrave
Tuesday 12th May 10.30am.
With advice given by Bakewell Police.

Pets' Corner



Across

- | | | | |
|----|---|----|--|
| 3 | Pass in N Derbys. (5) | 1 | Natter, natter, natter (6) |
| 6 | Cat with no tail (4) | 2 | Crested Australasian bird (8) |
| 7 | Crested lizard (6) | 4 | £25 (4) |
| 8 | The Cheshire variety are reputedly happy (3) | 5 | A Sailor's pretty boy (6) |
| 13 | Rowley was the standard one in Eastenders (6) | 6 | This chap is so quiet (5) |
| 14 | Roland the rapster (3) | 9 | Household pretty boy (6) |
| 15 | Cheeky rodent (7) | 10 | Sounds like a frightening fastener (8) |
| 16 | Man's best friend (3) | 11 | The twins if you please! (7) |
| 17 | Border or Bedlington (7) | 12 | This is the trio who lost their mittens (7) |
| 18 | Young of 16a (5) | 13 | Pot bellies have been known to be all the rage (4) |
| 20 | You keep them in the loft (7) | 19 | - - - natus - a boxer? (3) |
| 22 | The Miners' friend (6) | 21 | Desert rodent (6) |
| 23 | The Piscean cardholder (8) | | |

Down

The Value of Visitors

I read Jeniwen's thought-provoking piece in the last Bugle with much interest.

Her comments on preserving the wildlife and natural beauty of Bradford Dale and the Youlgrave area are entirely valid, but by calling for fewer visitors she is not facing up to the reality of living in an ever more popular and accessible national park. Like it or not, the Peak Park is one of the most heavily visited in the world, and since our national parks are living entities (rather than the tightly controlled sanctuaries in North America and elsewhere) we must face up to the implications of mass, modern tourism and try and find the correct balance.

Elsewhere in the last Bugle, it was reported that the recent Project Lever workshop concluded, amongst other things, that Youlgrave could be improved by better signposting, visitor information and village promotion. I can't really see the village publicans, shop and café owners, transport operators, youth hostel and B&B proprietors etc, wanting "fewer visitors" to the Youlgrave area. A significant proportion of the village economy is dependent on outside money. Nor can you arbitrarily stop people from walking down the likes of Bradford Dale which is, of course, a public right of way. Indeed the struggle to achieve basic public access to the countryside has been fought long and hard over the last 50 years, and nowhere has it been more keenly

and symbolically fought than in the Peak District.

Surely the way forward is to encourage a more enlightened and responsible type of visitor. For instance, traffic is a major problem in Youlgrave, as it is elsewhere in the Peak, so why not consider restricting parking in the centre of the village for non-residents, or closing off certain thoroughfares like Holywell Lane at peak times? Force visitors to use, say, a well-screened out-of-village car park, or how about a park and ride scheme from Bakewell or Matlock into Youlgrave?! Some discreetly-positioned notice boards or signposts could be effective in re-routing pedestrians away from eroded or ecologically sensitive spots - it's surprising how many people will only go where a sign tells them; and the presence of a roving national park warden or well-sited information stand on key occasions might also help. The National Trust already use this tactic to good effect on some of their estates, and they also produce a range of simple but effective leaflet guides for visitors that explain relevant local issues like conservation.

Bradford Dale may be a beautiful river valley, but Youlgrave is also a living village whose limited economy is reliant on tourism. How we deal with it, rather than can we curb it, is the key to the future.

Andrew McCloy

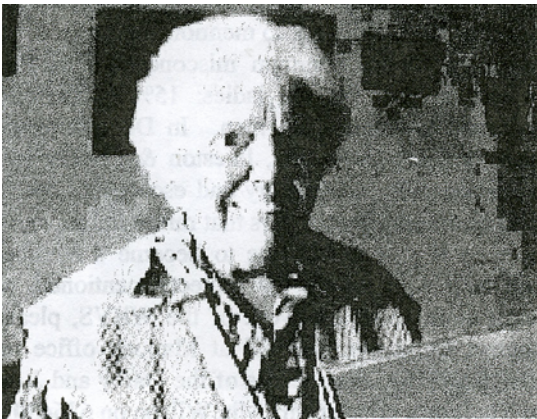
A Prime Example !

Youlgrave resident, Martha Prime, was this year's first Community Care Award recipient in the area. The awards are given by Derbyshire Dales District Council to local people carrying out valued community work.

Mrs Prime knits blankets and children's clothes for worthwhile causes spanning from local hospitals to aid organisations in Romania and Bosnia. She has a wonderful album full of cards and letters from grateful recipients.

She was absolutely thrilled to receive the award at the Lunch Club at the Village Hall. Cllr Bernard Oldfield had nominated her for the award, which came as such a pleasant surprise.

Mrs Prime would like to thank everybody who has given her wool and buttons. More are always needed.



Middleton Well Dressing

Saturday 23rd May is the annual Well Dressing at Middleton. In 1977 a number of villagers decided to dress the well in the village to commemorate the Silver Jubilee of Queen Elizabeth II. Well Dressing had lapsed and the last known dressing was in 1897, for Queen Victoria's Diamond Jubilee.

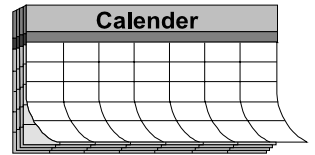
Since 1977, a team of about a dozen people have continued to produce a Well Dressing of a high standard. Traditional methods of decoration are maintained, meaning only natural materials are used. Gardens and hedgerows are raided, even the hair on your head is not safe!

The Well Dressing is erected at 8am on Saturday and at 1.30pm there is a bustling Village Market with a tombola, cake stalls and other attractions. Home-made refreshments are served in the Village Hall over the Bank Holiday weekend.

The well is to be blessed on Sunday 24th before Evensong.

Over the years the Well Dressing has raised money for both local and national charities. Last year a donation was made to Derbyshire Ambulance Lifebike Appeal. The proceeds of the market and the teas go to the Village Hall fund.

Forthcoming Events



<p>Monday 11th May Tuesday 12th May Saturday 23rd May Wednesday 27th May Wednesdays Wednesdays Thursdays Fridays</p>	<p>Millennium Meeting. Youlgrave Village Hall, 7.30pm. Neighbourhood Watch coffee morning. Granby House, 10.30am. Middleton Welldressing and Village Market, 1.30pm. Teas for Save the Children. Church Barn, Middleton, 2.00 - 4.30pm. Life drawing classes with Diane Kettle. Middleton Village Hall, 7.30pm. Theatre Workshop with Jack Blackburn (tel 636689 or 636043). Greenfields Farm Barn, 7.00pm. Peak Rural Welfare Rights Project 'Benefits Advice'. The Doctors' Surgery, 10 - 11.30am. Yoga with Iris Pimm at Greenfields Farm Barn, 9.30 - 11.00am.</p>
---	--

Please let us have more details of events for the next edition

The Publishers accept no liability for the accuracy of the information given.

April QUIZ Answers

1) Magnificent Seven Actors.

Yul Brynner, James Coburn, Steve McQueen, Robert Vaughan, Charles Bronson, Brad Dexter and Horst Bucholtz.

2) Doctor Whos on TV.

William Hartnell, Patrick Troughton, Jon Pertwee, Tom Baker, Peter Davison, Colin Baker, and Sylvester McCoy.

3) Seven Wonders of the Ancient World.

Pyramids of Egypt, Hanging Gardens of Babylon, Mausoleum at Helicarnassus, Temple of Artemis at Ephesus, Colossus of Rhodes, Statue of Zeus at Olympia and Pharos (lighthouse) at Alexandria.

4) Seven Deadly Sins.

Pride, covetousness, lust, envy, gluttony, anger and sloth.

5) Cinque Ports. (Yes, seven of them)

Dover, Hastings, Romney, Hythe, Sandwich, Rye and Winchelsea.

April WI

Youlgrave WI had a very interesting meeting on the Tuesday 14th April with Mrs Gloria Havenhand. She came out on a terribly snowy night and gave a talk on "Women in the Commons", giving an insight to Parliament. She told us that when the Members of Parliament are leaning their heads back and looking as though they are asleep, it is actually because they are listening to audio speakers which are situated just above their ears on their chairs. So the next time we watch The Prime Minister's Question Time we shall all know a little more about what is happening.

The next meeting is at Stanton in The Peak WI on Tuesday 12th May to vote for the Resolutions. Stanton always make us very welcome and after home-made refreshments we have entertainment.

	Amy's Dairy - - - - -	636639
	Dave Axon, Independent DK Advisor - - - -	650628
	Castle Farm, B&B, Caravans & Camping Barn -	636746
	Eric Goodwin, Plasterer & Tiler - - - - -	636627
	The Farmyard Inn - - - - -	636221
	The Fish & Chip Shop - - - - -	636379
	B&M Frost, Caravan Site - - - - -	636302
	Roger Green, Val Verdé, Bakewell - - - - -	814404
	Hollands Butchers - - - - -	636234
A	The Knoll Club - - - - -	-
N	Peter Knowles, Architect - - - - -	636362
N	Meadow Cottage Tea Garden - - - - -	636523
U	A Murray, The Wee Dram, Bakewell - - - -	812235
A	Doug Oldfield, Handyman & Sweep - - - -	636797
L	Parkers Butchers, Wines & Spirits - - - -	636217
	Peak Rural Welfare Rights Project. - - - - 0800	214233
	Iris Pimm, Greenfields Farm Barn - - - - -	636341
	The Post Office - - - - -	636201
	SR & JK Roper, Builder & Joiner - - - - -	636498
	Roses Newsagents - - - - -	636874
	M&D Shimwell, Haulage, Sand, Cement & Blocks	636305
	A Twyford, Motor Engineer - - - - -	636093
	Youlgrave Garage - - - - -	636943
	Youlgrave Parish Council - - - - -	-

SPONSORS

WRVS

Mention the Women's Royal Voluntary Service and the general response is "Oh, you mean Meals on Wheels?". Whilst it is true to say MOW play a very large part in the life of WRVS, with 12m meals delivered annually, it is by no means the only service. There are the Darby & Joan Clubs (Meeting at the Village Hall on Wednesdays), home support services and holidays for disadvantaged children, to mention but a few.

Another common misconception is that WRVS is only for the ladies: 15% of the 120 thousand volunteers are men. In Derbyshire we have projects in Buxton, Ilkeston & Chesterfield hospitals, offering enquiry and escort services as well as running the tea bars that raise vital funds.

If you would like to become a member and help with any of the projects mentioned, or learn more about the work of the WRVS, please contact Celia Summerfield at Matlock office on **01629 583161**. For details of the Darby and Joan in Youlgrave contact Mrs Min Wilson on **636430**. For Meals on Wheels contact Ann Knowles on **636362**.