



# The Bugle



**A chance to blow your trumpet for the villagers of Alport, Middleton and Youlgrave**

**No. 91**

**December 2006/January 2007**

## Friendship bench for school

Youlgrave School has been awarded £250 from Derbyshire County Council's Community Leadership Fund to pay for a 'friendship bench' in the playground. It will be accompanied by a pergola that is due to



be made by a Youlgrave craftsman. Pictured here are Melanie Marsh (Chair of the School Association) and County Councillor Ray Caswell, together with pupils from the School, plus a rather large cheque!

\*\*\*\*\*

★  
★  
★  
★  
★  
★  
★  
★  
★  
★  
★  
★  
★  
★  
★  
★  
★  
★  
★  
★  
★

YOULGRAVE PANTO 2007: Robinson Crusoe

Performances nightly (except Sunday & Monday)  
from 23 January to 3 February at 7.30pm.

Saturday matinees at 2.30pm on 27 January and 3  
February.

Bookings from 4 December – see pages 8-10.

\*\*\*\*\*

**The Bugle is sponsored by Hollands Butchers Tel 636234**

# The Bugle

The *Bugle* now takes its usual winter break for the editorial staff to play with their new Christmas presents and enjoy the occasional sherry or two. The next issue will be February 2007 – deadline for submissions is **21 January**. On behalf of everyone connected with the *Bugle* may I wish you all a very Happy Christmas and a peaceful New Year.

**Andrew McCloy, Editor**

## British Legion 'thank you'

Youlgrave and District Royal British Legion would like to thank everyone for their donations this year, which amounted to £1,922.49.

Stan and Robert Roper would also like to thank everyone for their support on the recent Chatsworth Walk for Breast Cancer Research – they raised the impressive sum of £316.

## Youlgrave Bowls Club Christmas Band Concert

**Youlgrave Bowls Club is once again organising its annual Christmas concert by Youlgrave Silver Band. This year, the event will take place on Friday 15 December at 7.30pm at the Village Hall.**

**Everyone is most welcome and the cost of admission is £3, including refreshments. Anyone requiring transport to the concert please contact Bowls Club Secretary, Mrs M. Montgomery, on 636344.**



Dear Editor

Returning to our farmyard one Sunday morning I was met by two very excited members of my family telling me that they had just been watching something like a humming bird feeding on the sweet peas. Another sighting of the humming bird hawk moth, obviously?

Brenda Harrop  
New Farm  
Alport

## Middleton meeting

Towards the end of November a meeting was held in Middleton to explore possible community activities for women in the village. It was organised by Gateway through the Arts, a Leader+ project supported by Derbyshire Dales District Council, and was inspired by local people. "We need some activities to happen in Middleton-by-Youlgrave," said local resident Brenda Smith. "It's a shame if we always have to travel to nearby villages. I am sure there are people in our community who would enjoy getting together and doing something." Brenda and two other ladies from Middleton called a meeting at the village hall to ask people what they would like to see happen and leafleted every house. The meeting was due to take place as the *Bugle* went to print, so there will be more news on the outcome in the next issue, but if you missed it they would still like to hear from you.

Gateway Through the Arts has offered to stage some creative or craft workshops for afternoons in Middleton, so if you are interested in taking part please contact Brenda Smith on 636531, Ena Prime on 636527 or Dorothy Sandell on 636356.

**Order your Christmas poultry: turkey, chicken, duck & goose**

## Parish Council news

### Play equipment in place

Youlgrave Parish Council is delighted to announce that new play equipment has been installed on Alport Lane playing field to finally complete the junior play area. The centrepiece of the new apparatus is a climbing tower, complete with slide, ropes, pole and ladder (see photo below). The equipment has been paid for by Youlgrave Parish Council and Derbyshire Dales District Council.



### Parish Clerk passes the test

*Congratulations to Youlgrave Parish Clerk, Matthew Lovell, who has just passed his Certificate in Local Council Administration (CiLCA). This national qualification is a recognised measure of competency and requires Clerks to produce a detailed portfolio addressing the many and varied skills needed by any administrator in local government. Matthew joins around 30 other Parish Clerks in Derbyshire who have now attained this qualification.*

**Order pork, local lamb and beef joints**

## VILLAGE NOTICEBOARD

### Horticultural Society seeds

Don't forget that you can buy your flower and vegetable seeds through Youlgrave Horticultural Society. We order from the Sutton catalogue and, in previous years, have qualified for a 40% on shop prices. This is dependant, however, on the size of the order. Anyone interested can get a copy of the brochure and order from Dorothy Johnson, Woodbank House, Moor Lane, Youlgrave, tel 636895.

### School fundraising success

Youlgrave School Association would like to thank everyone who supported last month's pre-Christmas fundraising event in the Village Hall, especially those local individuals and businesses who contributed prizes. Over £1,000 was raised – a fantastic achievement.

### New bells for church tower

Three new bells recently donated to All Saints, Youlgrave, are to be dedicated at the church on Saturday 30 December at 2.30pm. Full report to follow in next issue.

### Neighbourhood Watch

The latest issue of the Neighbourhood Watch newsletter is now out. Free of charge, copies are available in Youlgrave's shops and pubs. Don't forget, your three Youlgrave Neighbourhood Watch Coordinators are: Irene Norris (tel 636993), Stella Sparrow (tel 636022) and Barbara Walker (tel 636884).

## BUGLE LETTERS: WHAT FUTURE FOR OUR DAIRY INDUSTRY?



Dear Sir,

The plight of the British dairy industry has had something of an airing in the media of late and we wondered if the full impact of the potential loss of this part of the agricultural and local scene had hit home in *Bugle* country?

Supermarket bosses are so determined to source cheap milk for their stores that British milk producers, already barely breaking even and unable to find the cash to maintain, let alone upgrade to the high production standards demanded, are condemned to go out of business for the sake of a few pence per litre.

The new, cheaper milk is likely to come from Eastern Europe, the only area able to produce the quantities required. Quite apart from putting British milk producers out of business, this is highly problematic for a host of reasons. Firstly, are Eastern European producers capable of replicating the exceptionally high standards of safety and hygiene, so closely adhered to by our own producers, and required by law? As developing countries, it is hardly their fault if they are not, but are greedy suppliers and the ever-more-powerful supermarkets going to put our health at risk by selling us poor quality milk and dairy products for the sake of profit? The answer is yes unless we, the current producers and consumers, say very loudly and clearly that this is NOT what we want.

The huge distances this Eastern European milk must travel is another possible source of contamination and waste. And what about that travel? It is totally unacceptable morally, environmentally and politically. Since the environment now dominates so much of the political scene, is it right to consume enormous amounts of fossil fuel and other forms of energy to import the country's milk supply. Is it planned

to airlift in millions of gallons of milk? Think of the energy needed for the fuel and refrigeration units to bring in this vast quantity of milk overland. And what about the added congestion on our dramatically overcrowded roads?

It is interesting to calculate how much the importers will pay the Eastern European farmers per litre for their milk if they can pay the huge and ongoing costs of importing it, put in the same safety checks and controls that we expect of British milk now, process it and package it for the supermarket shelves and still find it is cheaper than the British product. Our farmers are currently paid 17 pence per litre – you do the maths! Is such a derisory price for either set of producers acceptable and since much of Eastern Europe is still struggling to feed its own

***“When the cows have gone, the whole nature of much of the countryside will change – for ever”***

populations adequately, has the comfortable West any right to deprive them of a large part of their nutritionally valuable milk supply for the sake of already inflated profits?

Nearer home, the loss of our dairy industry will see the mass slaughter of dairy cattle countrywide. Surely there was enough of this during the recent foot and mouth outbreak, another agricultural fiasco directed by an administration that does not know one end of a cow from another. When the cows have gone, the whole nature of much of the countryside will change – for ever. Many farmers will go out of business – again – and many people employed in the dairy business will find themselves without jobs, adding to the well-concealed problem of rural deprivation and lack of opportunity. Is this what we are going to let happen when a mere 3 pence per litre of milk would go a very long way to solving the problem?

*Continued next page*

**Home made cocktail sausages, plus Cumberland ...**

*Continued from previous page*

## Youlgrave Village Hall – increase of charges

New legislation, the price of fuel, and increased insurance have caused the true cost of running the hall well above published price indices and, regrettably, charges for using the hall are being revised. Most charges will increase by about 12% from February 2007. The special low charges that have been applied to ‘good causes’ will cease since that differential ‘taxes’ other users. In future, a small charge will be made for loan of hall property.

However, all charges will continue to be heavily subsidised by the pantomime, attic sales, teas served to the public during well dressing and, most of all, by the effort of our volunteers. Unfortunately, some users abuse that effort so, in future, hire plus £20 returnable deposit are to be paid for in advance. A returnable deposit of £5 is charged for borrowed keys. Monies are returned if the hire is cancelled – the deposits are merely a sad, but necessary, reminder to those few who forget that the village hall is to be treated as if it were their own property. It is!

For the Management Council of Youlgrave Village Hall Registered Charity 520538

Milk tokens are available to low income families and with a little more money in the system, the scheme could and should be extended to pensioners and others in need. Do YOU honestly know without looking how much you paid for your milk last time you went shopping?

Versions of this letter will be sent to our MP, to the appropriate officials at DEFRA and to the managing directors of all the big supermarket chains, with what we hope will be a very well supported petition, asking for a small and realistic increase in milk prices. Copies should be at the local pubs and shops by the time the *Bugle* appears or email [deechat@tiscali.co.uk](mailto:deechat@tiscali.co.uk) for further information or petition forms if you think you can help.

Dee Frith & Amy Tabbenor  
Youlgrave

POTS FROM FRANCE

### Winter Exhibition 2006

Opening Saturday 2 December,  
preview 1pm. Daily 10am to 6pm until  
Saturday 23 December

Large selection of individual and functional pieces from leading French makers. The work explores a wide range of decoration and ceramic technique.

*Bankside Cottage, Bankside,  
Youlgrave, tel 636043/636689*

### CALLING ALL CRICKETERS IN THE YOULGRAVE AREA

Are you interested in playing cricket in Youlgrave next season (midweek and weekend teams)? All welcome.

Call Paul Durward on 01246 566706 or Rick Podmore on 01246 472623.  
More details in the next *Bugle*.

**... pork and leek, tomato, lemon and herb varieties**





### D of E delight

**LEFT:** Youlgrave's Duke of Edinburgh's Award group has been boosted by over £300 towards new maps, compasses and first aid equipment. The money comes courtesy of Derbyshire County Council's Community Leadership Fund. Pictured left are group members with County Councillor Ray Caswell.

### READING ROOM ROOF APPEAL GIVEN A BOOST

Youlgrave Reading Room has received £1,000 for its roof appeal from the Midlands Co-operative Society. The donation came from the Society's Making a Difference Community Dividend fund, which sees one per cent of the Society's trading profit distributed among local groups. Reading Room secretary, Glenys Moore, told the Matlock Mercury: "We had some refurbishment work carried out in 2003 and are now working towards disabled toilet facilities, as well as work to be completed on the roof."

### Youlgrave Surgery web page

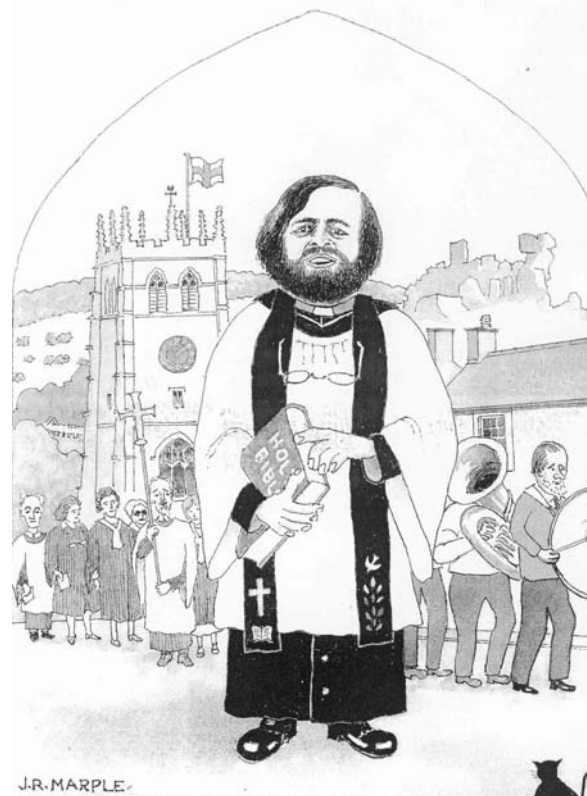
The website address we gave for Youlgrave Surgery in the last issue should have read [www.darleydalesurgery.co.uk/youlgreave.html](http://www.darleydalesurgery.co.uk/youlgreave.html). The site includes surgery hours and consultation times, as well as a becoming colour photo of the building.

**Home cooked boiled ham, roast pork, tongue, turkey, roast beef**

### New funds for wildlife garden path, steps and pond surround

Bankside Wildlife Garden trustees are celebrating at the news that Awards for All has approved their application for over £5,800 for the construction of pathways, steps and handrails around the community wildlife garden on Bankside, Youlgrave. It will improve public access and safety in the garden, as the team of volunteers steadily removes the weeds and unwanted undergrowth. The money will also pay for a retaining wall on the steeply-sloping terraced plot, as well as capping for the newly-created pond.

## Church services: Christmas 2006



Rev Ossie Post – illustration by John Marple.

Sun 3 Dec (Advent Sunday): 11am Family Communion, 6.30pm Advent Carol Service [Y]

Wed 6 Dec: 10.30am Holy Communion at the Vicarage [Y]

Sun 10 Dec: 11am Christingle Service [Y], 6.45pm Carol Service [MbyY]

Wed 13 Dec: 6.30pm, School Carol Service [Y]

Sun 17 Dec: 11am Christmas Praise, 6.30pm Nine Lessons and Carols [Y]

Mon 18 Dec: 7pm Carol singing at Holywell Lane, Youlgrave

Tues 19 Dec: 7.30pm Women's Institute Carol Service [Y]

Sat 23 Dec: 10am Granby House Christmas Communion

Sun 24 Dec: 5pm Crib Service, 11.30pm Christmas Holy Communion [Y]

Mon 25 Dec: 9.30am Christmas Holy Communion [MbyY], 11am Christmas Family Communion [Y]

Sat 30 Dec: 2.30pm Dedication of 3 new bells recently donated to All Saints Church, Youlgrave

### Memorial candles in Youlgrave Church

Don't forget to check or add to the list in the church. And a reminder: when the candles are displayed and lit in church, they are put in alphabetical order of names, so all the candles you may have named are together, starting with surnames beginning with A at the end by the old piano. They are lit for the Carol Service on Sunday evening 17 Dec at 6.30pm, the Crib Service on Sunday 24 Dec at 5pm and the same evening at 11.30 pm. Please remove your candle/s, if you so wish, any time after the Christmas Eve 11.30pm Holy Communion Service and take it/them home to light over the Christmas period. They can't be used again, so they have to be thrown away. Many thanks to **Roger Easton**, who kindly put all the candle names on the computer and has printed out the labels for the last (I don't how many!) years. Thanks, too, to **Lisa Walshaw**, who has agreed to take over job, to give Roger a rest!  
**BS**

**Order bread for Christmas by 19 Dec (ordered bread *only* over Xmas)**

# YOULGRAVE PANTOMIME

Writer and Producer **Jan Wilson** introduces this year's production:  
*Robinson Crusoe* – 'a traditional family pantomime'

I am grateful to the *Bugle* for allowing me to tell you something of the tremendous amount of work that goes into the production of our annual pantomime. From various comments made over the years I realised that many people thought "it just happened" as if by magic! A great compliment to everyone who has made it seem so, but nothing could be further from the truth.

As soon as the title of the pantomime has been agreed, I check round to see who will be available for the cast before starting to write the script. The first advantage of writing your own script is that you can fit the book to the players, rather than vice versa. The second is that we avoid the cost of hire charges and royalties, worth several hundred pounds to the final receipts. Meanwhile, the backstage designers have swung into action.

After a telephone call to Cumbria, Margaret Fell starts to design the scenery, with telephone conferences with the producer as the work progresses. Some time ago, one of our critics commented on the amount of use of the Silver Drop. This is a wonderful treasure, invented for the first pantomime in 1962 and still in use today, which allows the backdrops to be changed whilst the action continues 'in front of the Silver Drop' rather than continually shutting the main curtains. Happening to meet the critic one day, I explained why it was used. "Oh, I see, I hadn't thought of that!" Another of those magical happenings.



Susan Lomas starts to design the costumes, scouring the shops in Derby for the beautiful materials which she and her team of sewing Ladies use to make the stunning costumes for which Youlgrave Pantomime is justly renowned.

## Made to measure

As soon as the children's auditions have taken place, the first task is for all measurements to be taken and then Mrs Dorothy Sandell can start the delicate task of 'cutting out' the patterns and materials. Dotty Johnson takes on the overseeing of the costuming of the whole chorus for some scenes – a mammoth task when you realise that there are 16 children in this year's production – and the rest of the sewing ladies, led by Judith Taylor, have been sewing every Monday and Wednesday evening in the Sewing Room, calling for costume fittings as needed.

They also take work home with them and this will continue right up until the pantomime opens in January. I must add that they really enjoy it all, but would welcome any other sewers who would like to come and join in and help.

Over two and a half days one weekend, and Monday to Friday the following week, working from 9am till 4pm, all the scenery was painted! This truly amazing feat was accomplished by Margaret Fell, Rita and Harry Hutchinson, John Clark and Jan Wilson.

# – THE ONGOING STORY

The canvas backdrops measure 18' by 10'6" and Margaret drew out the first of six designs whilst the scenery painters set up the paint table on one side of the stage, fetched up the paint from the workshop and unpacked the special brushes we use, kept safe from year to year. This year, Margaret brought us some new paint in bottles, which was very useful for mixing different colours. We set up a small table on the other side of the stage and here we had our coffee and lunch, as the hall is so much in use that there was no other place for us. Many days we had to work with the main curtains shut, the stage lights on to see what we were doing and so in very hot conditions, whilst the main hall was in use for the Monday Club Day Centre, Badminton, or, best of all, the Tea Dance, when we could sing along to the music and paint in time to some of the dances! The side flats are repainted each year to fit in with the theme of the pantomime and a top feature made for the proscenium arch to finish off the decoration and set the mood for when our audience arrives.

The Props Department (Carole Sutcliffe and Chris Hallam) swung into action at the end of October, and after a short discussion with Jan, they have been very busy with the many and varied props on their list, ranging from hand held props to wheeled vehicles, some of a nautical nature!

With the script finished, and 40 copies kindly printed and collated by Tissie Reason, rehearsals every Monday and Wednesday are now well under way, with the children's rehearsal from 6.30pm until 8pm, and the adult cast of 15 coming in at 7.30pm, so as to overlap by half an hour with the children. This is so that both sides

can get used to sharing the stage space (not large!) with each other and rehearse the songs and actions where they meet. After fruit drinks, the children go home and the adults continue rehearsing after a short tea-break until 9.45pm.

Elizabeth Shimwell has 'stepped in' as choreographer and is doing a wonderful job, with the help of Robyn Parker Barratt and the enthusiastic cooperation of the children – where DO they get all that energy?!

## Musical arrangements

The music in the pantomime is chosen at the time I write the script, and is a blend of old and new, ballads, comedy, modern and good old sing-a-long numbers which the audience will be encouraged to join in. This year Nick Stacey has created some wonderful arrangements for the show and has taken most of the music rehearsals, both with the children and the main cast. With great skill, he has encouraged and

**Booking starts  
on Monday  
4 December**

**Ticket hotline:  
01629 636084**

trained people to sing as they never thought they could and the results are marvellous! The lighting technicians will arrive at the beginning of the New Year, a new lighting design will be worked out with the production team and the lights overhauled, new coloured gels put in where necessary using the tall ladders in the main hall.

The stage crew will start to attend rehearsals, checking the departments' needs and operating the silver drop at some rehearsals until the final week, when Act 1 will be played on Monday and Act 2 on Wednesday, using all props and scenery.

*Continued overleaf*

**Opening times: Mon-Thurs 8am-5pm, Fri 7am-5.30pm**

**Sat 7am-5pm and Sun 8-11.30am**

## YOULGRAVE PANTO: 45 YEARS OF VILLAGE TRADITION



*Continued from previous page*

Then on Sunday 21 January we shall see Youlgrave Pantomime in all its splendour for the first time as the dress rehearsal takes place. Even after 30 years, I can still feel the sheer wonder and magic of it and the look on the children's faces says it all as they realise all the hard work of the past months has brought us to this moment!

Press releases to both newspapers and the local radio stations will be circulated straight after Christmas and the press will be invited to take photographs for publication in the various local newspapers a week before the show starts. This always sparks a renewed rush of bookings!

### Box office and bookings

Behind the scenes, Mike and Ingrid Newman have taken on the booking office for the pantomime this year. This is a big task and we are truly grateful to them for doing this. This year there will be no performance on Monday, but instead there will be an extra matinee on the last Saturday. Do look out for the posters round the village and please ONLY ring during the booking hours of 10am-6pm on weekdays and 10am-1pm on Saturdays.

Peter Rowland has already printed the tickets and Judith and Helen are numbering them all by hand before delivering them to Mike and Ingrid. Mike has also taken on the task of preparing the programme this year. Norman Wilson has designed the cover and Mike is contacting all the advertisers, verifying the advertisements, and writing and typesetting the rest of the programme before it goes off to Jim Bower of Reprint, Youlgrave, who has once again kindly offered to sponsor this for us.

Ice-creams, lollies and refreshments will be ordered; the seating (192 chairs and cushions) put out after the staging has been

erected; the blackouts put up to the windows; main hall and box office swept out; orchestra pit erected; percussion and piano, newly tuned, installed; and front of house lights checked.

Backstage, the committee room will be turned into a rest room for the children, the sewing room into a dressing room for them and a rota of dressers for each of the 12 performances drawn up. Upstairs, the make-up boxes will be got out, refurbished and set up with a mirror in the kitchen, where the make-up for the main cast is done by Dorothy Jerman. The Social Room is once again partitioned into two to make dressing rooms for the ladies and gentlemen of the cast, complete with mirrored table. All the costumes for the cast are brought upstairs and hung on clothes rails by character. The props are laid out on the trolley in the order in which they will be used and 101 extra jobs are also fitted in!

The scenery bay, where the chairs live for the rest of the year, is now filled with stage furniture and the Stage Director's wall plan of the forthcoming production, the scenery changes and cues. There is a tremendous amount of hard work put into the production each year, from September to February, by approximately 60 people, all doing their best to make sure that the very high standards set 45 years ago are still kept today.

And now... the sound relay system to the backstage and downstairs rooms is switched on... doors open at 7pm, as the first party enters... for 'Robinson Crusoe' – a traditional pantomime, a Youlgrave Pantomime for 2007. We look forward to seeing you all there!

**BOOKING FOR ROBINSON CRUSOE Starts on Monday 4 December**

**Ticket hotline: 01629 636084 (weekdays 10am-6pm, Saturdays 10am-1pm)**

**Closed Mon 25, Tues 26 & Wed 27 Dec**



## YOULGRAVE PLAYSCHOOL CHRISTMAS FAIR



This year's fair will be held on Saturday 9 December, between 10am and 12 noon in the Scout Hut, and promises to be a very festive affair. The 50p entrance fee includes a drink and mince pie which will be enjoyed against a background of favourite Christmas music. There will be traditional games and stalls, including a tombola, bran tub, cakes, bric-a-brac and crafts made by the children.

Tickets are currently on sale for the raffle, with prizes of vouchers for meals, wine, produce and a Christmas tree, as well as pantomime tickets, hampers and more. The Christmas Quiz is also on sale at local shops and the winner of the £25 prize will be announced at the fair. This year, every penny raised will be doubled by an anonymous donor so, *please*, come along and support your local playschool.

We would like to thank our donors so far: Derbyshire Aggregates - £200 to sponsor the raffle, plus donation; Derbyshire County Councillor Ray Caswell's Community Leadership Fund - £200 for musical instruments; Paul Young - £50 for Christmas books; Amy Tabbenor; The Peacock Hotel (Rowsley); John Hattersley Wines (Bakewell); Haddon Estates; Shaun R Curtis shoe repairs (Bakewell); the Harrops; Buxton Opera House; Waitrose (Buxton); Ibbotson's of Ashford; Stork of the Town (Bakewell); The Wee Dram Whisky Shop (Bakewell); The Grouse and Claret (Rowsley); Julian Graves; and Emma-Kate Studio (Darley Dale).



**THANK YOU!**

### GIFTS FOR BANGBUTT

*Pictured right:* Children and teachers in Bangbutt, Sierra Leone, with the gifts that were sent out earlier this year from Youlgrave as part of the Village Link project.

*Photo submitted by Barbara Scrivener*



**Re-open Thu 28 Dec (8am-2pm), Fri 29 (8am-4pm), Sat 30 (8am-1pm)**



# Youlgrave: captured on canvas

**Dee Frith** describes artist Lucien Pissarro's memorable visit in 1928.

**The lesser-known son of a famous father, Lucien Pissarro struggled to make a living as a landscape artist, constantly in the shadow of the great Camille.**

Based in West London and a British citizen since 1916, Lucien spent most summers on working holidays in the English and occasionally French countryside, following a punishing schedule of painting and sketching to produce new collections of saleable pictures. Family finances were always precarious.

It was Margaret Pilkington who suggested Youlgrave as a possible destination for a painting trip. She had known the Pissarros ever since her student days at the Slade (School of Art) with their only daughter, the flamboyantly named Orovida. Her own family owned Lancaster Ceramics and were patrons of the arts, as well as keen ramblers. The White Peak was within easy reach of their Manchester home.

In April 1927, Lucien's wife, Esther, contacted Margaret to ask if there was a suitable Manchester venue to show her husband's work. The Jackson Gallery on Police Street was proposed and Esther quickly organised the event.

Early the next year, Margaret wrote to the Pissarros about Youlgrave: "I think it quite a possible place, possibly the best. It stands well, overlooking a valley and is near the junction of several dales. It is fine, varied country."

Lucien and Esther decided to reconnoitre the area. The end of June found them at the Peacock Inn, Rowsley, where the



*Lucien Pissarro (seated) with his sons, in 1894.*

Pilkingtons sent a car (a Daimler No 2) and a driver equipped with a map and detailed instructions to help them explore their surroundings.

They did indeed settle on Youlgrave. Early July saw them installed in the Bull's Head on Fountain Square, where they paid 9/- a day, which included tobacco and a copy of the Daily News. Even this overstretched their finances and Lucien found cheaper lodgings at Coldwell End in the newly-built, semi-detached villa, Westcroft, which had been recently purchased by the Hayes family. Mrs Hayes used her new lodger's first instalment of rent to buy a stair carpet. Her son, Ivor, who continued to live in the house until 1989, used that carpet as an underlay – sections of it, in garish orange and dark brown, were still clearly visible! The Westcroft provided congenial lodgings and Lucien thoroughly approved of his landlady. In a letter to Esther, who had by now returned to London, he wrote: "Mrs Hayes is very nice and obliging, everything clean and she cooks very well." This must have alarmed his wife so much that when she found the

time and money to visit Youlgrave, she begged the good lady not to feed Lucien too well or he would become "too fat and lazy to paint"! Her request fell on deaf ears, Mrs Hayes continued to make him his favourite pigeon pie, buying her birds from the pigeon fanciers of the now demolished Knocking Alley, then almost opposite her house.

*Continued on next page*

*Continued from previous page*

The young Ivor often used to caddy for the artist, carrying his easel and paints down to Bradford Dale, but not far beyond. Lucien's health was fragile and a stroke at the early age of 35 had weakened his left arm and he tired easily. However, Youlgrave could scarcely have better fitted his idea of perfect subject matter. As he was later to write to a nephew in 1939, "for my motifs I only like little corners which compose harmoniously." At the time, he bewailed the fact that "all the nice places are down below with tiring climbs at the end of each séance".

As always, the weather proved problematic. "Another changeable day! Windy with the occasional storm!" was a typical moan. One week was so wet that he did not venture out at all but painted the view from his bedroom window. This he offered as a gift to Mrs Hayes. The misguided lady refused it on the grounds that it was too

dark and gloomy! Even good weather could be troublesome. "English sunshine?" he snorted. "C'est de la blague!" (What a joke!) "When there are two or three days without rain, they cry that the water supply is going to give way!" There was, at the time, a hosepipe ban in London. By the end of July, he was desperate to finish canvas 15. In near panic he wrote: "I fear the magnificent hay in my foreground may tempt some haymaking people and they will cut it down. That would be disastrous for me." By the morning of 30 July the painting was finished. In the afternoon it rained, which was probably disastrous for the haymakers!

After an excursion to Bakewell for a haircut, Lucien commented: "the place itself

is not interesting, though the country round is very fine." However, a Sunday walk to Robin Hood's Strides with Mr Hayes, Ivor and other men from the village was declared a great success. Ivor remembered the painter stopping spellbound, halfway across a stile at the foot of the gritstone outcrop, looking back over a field of ripening cabbages and exclaiming in delight: "C'est bleu! C'est bleu! C'est magnifique!" Sadly,

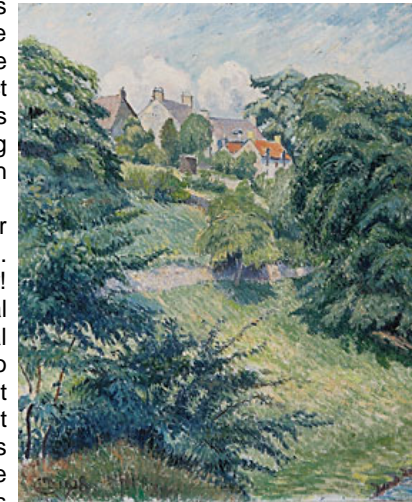
he left no painted record of that cabbage field, shimmering blue-grey against the morning sky.

By 18 September it was time to leave Youlgrave. Lucien had completed 14 oil paintings, plus several watercolours and sketches. The selling show at Jackson's Manchester gallery was a relative success, although one canvas, entitled 'Middleton Dale' appeared in December of 1928 in the sale at the Ruskin Galleries, Birmingham, for £33 - a discount of 25%. It seems, however, that none of the

Youlgrave paintings is in the public domain, even in Manchester where several Lucien Pissarro works are displayed. Two years ago, a painting entitled 'Brookleton' was auctioned for \$135,000 in Auckland, New Zealand.

The Pissarros never returned to Youlgrave, although the friendship with Margaret Pilkington continued over the years. At the outbreak of the Second World War, Esther and Lucien moved from West London to Chard, Somerset, where Lucien died in 1944.

*This article first appeared in Reflections magazine earlier this year and is reproduced with kind permission.*



*Brookleton, Youlgrave, by Lucien Pissarro*

**Closed Sun 31 Dec 2006 and Mon 1 Jan 2007**

**Re-opens Tues 2 Jan 2007 (8am-12 noon), Wed (8am-12 noon)**

## IT2VILLAGES

- Do you work for or run a local business?
- Do you or your staff need training?
- Are you looking to change your career?
- Are you hoping to start a business?

If the answer to any of these questions is **YES** then IT2Villages may be able to help. We are looking for people who need training for work. We can run courses or training workshops in computing or business skills – in your village, at convenient times for you. **We need to know what kind of training you want and how you'd like it delivered.** Simply ring and leave your contact details with Derbyshire Adult Community Education and our project worker, Alison Rooke, will get in touch with you. You can ring either our Hope Valley office on 01433 620662 or the Bakewell centre on 01629 813747 or e-mail [sbond@hopevalley.derbyshire.sch.uk](mailto:sbond@hopevalley.derbyshire.sch.uk)



### Training for community groups

December sees the first part of a programme on 'Developing Volunteer led Youth Groups'. This session is run by Marion Beloe, who is a qualified youth worker with considerable experience of working in the voluntary sector.

In the New Year we have the second part of this youth group training on Tuesday 9 January at the Medway Centre in Bakewell, between 10am-12.30pm.

Also, on Tuesday 6 February, DDCVS Chief Executive, Neil Moulden, is running a session on the Charities Bill. This will take place at the Community Room in Ashbourne Leisure Centre between 10am-12.30pm.

To book your place or to find out more please contact the Council for Voluntary Service on 01629 812154 or email [enquiries@ddcvs.org.uk](mailto:enquiries@ddcvs.org.uk)

## Christmas Harmony Singing Workshops

with Lester Simpson

Sat 2 December (10am-12 noon & 1-3pm) & Wed 20th December (7-9pm) at Monyash Village Hall. Suitable for adult beginners – will lead to Monyash Christmas Concert. For more details contact Mary de Ville, tel 01335 300510 or Penny Kill, tel 01629 761194... or just turn up on the day!

**Thurs 4 Jan (8am-4pm), Fri 5 (8am-5pm), Sat 6 (8am-1pm)**

## Sustainable Youlgrave goes public

**Youlgrave's new environmental group, Sustainable Youlgrave, held its first public meeting last month. The local audience came away from the packed Reading Room brimming with ideas – and questions.**

There were short, illustrated presentations on various aspects of renewable energy that might be feasible in the Youlgrave area, including solar, wind and water power. Fred Baker also explained the ins and outs of methane digestion, a process commonplace in Germany but as yet undeveloped here, whereby methane is 'harvested' from slurry and organic waste to produce electricity (see *Bugle*, May 2006).

There was also a focus on how we can all be more energy-efficient around our homes and in our daily lives. A short questionnaire was handed out to gather some basic information on the levels of home insulation, etc, in our area. The reward was two free low-energy light bulbs!

The meeting only touched on what is a vast subject, and there were areas (such as composting, allotments, water saving, and so on) that were barely mentioned this time. SY Chairman John Youatt also suggested that the new group could potentially act as an impartial information and advice point for local residents interested in installing renewable energy products. Perhaps one day Sustainable Youlgrave could even bulk-buy energy-saving products for our community to purchase at a reduced price?

Other suggestions from the floor included using ground heat, developing a car share scheme and promoting

**Ten simple things you can do to save energy and money, stop global warming and look after the planet:**

1. Turn your thermostat down by 1°C (it could cut your heating bills by up to 10% and save you around £40 per year).
2. Close your curtains at night to stop heat escaping through the windows.
3. Always turn off the lights when leaving a room.
4. Buy local produce from local shops.
5. If you're not filling up the washing machine, tumble dryer or dishwasher, use the half-load or economy programme.
6. Replace your light bulbs with energy-saving ones – they last up to 12 times longer than ordinary light bulbs.
7. Turn appliances off at the socket if you are not using them, and especially overnight (e.g. telephones, TVs, stereos & computers).
8. Next time you go to Bakewell, don't drive – cycle or take a bus.
9. Only boil as much water as you need.
10. Recycle and buy recyclable products with minimal packaging to reduce the

greater use of public transport.

The audience heard how Sustainable Youlgrave has been awarded £5,000 by the National Park's Sustainable Development Fund to launch a feasibility study into potential renewable energy schemes in the Youlgrave area. Developing the idea of sustainability and encourage energy-saving within our own community is priority.

For more details on Sustainable Youlgrave contact John Youatt on 636241 or email [john@youatt.co.uk](mailto:john@youatt.co.uk).

**Hollands Butchers, tel 636234**



## PIE & PEA SUPPER AND QUIZ

at

THE VILLAGE HALL,  
YOULGRAVE

FRIDAY 12 JANUARY 2007  
at 7.30pm

TICKETS £6 available from  
village butchers shops  
or ring 636527

Proceeds in aid of Middleton  
& Youlgrave Church Funds

Please make a note in  
your diary.

### Seasonal Jokes of the Month

What do elves learn in school?

The elf-abet

What Christmas carol is a favourite  
of parents?

Silent Night

What do you call people who are  
afraid of Santa Claus?

Claustrophobic

Why does Santa have 3 gardens?

So he can hoe, hoe, hoe...

What kind of candle burns longer, a  
red candle or a green candle?

Neither – a candle always burns  
shorter!



## GO WILD IN THE GARDEN

Wildlife is busy, now, finding shelter and food to see them through the winter. Discreet piles of logs and leaves left here and there are a huge help to insects, birds and hibernating hedgehogs. Common ivy is an excellent plant for winter shelter and food and nesting sites in the spring. The caterpillars of the holly blue butterfly feed on the flowers of ivy and remain there as chrysalises through the winter. Bird winter visitors will eagerly consume the berries.



## WILDLIFE PROJECT

Native trees attract a wide range of birds and insects and can be best planted in winter when dormant. The best species of native tree for the smaller garden are alder (where the ground is wet), silver birch, mountain ash, field maple and crab apple. Large shrubs such as hawthorn, holly, dogwood and hazel are also useful additions to the wildlife garden. There are some lovely ornamental varieties of the common elder, with purple or golden foliage.

**Maureen Parry**

*Maureen Parry can be contacted for  
Garden Design on 630064*

## A Christmas card from Spain



My wife has always been fiercely proud of her English nationality, but after a few years living in Spain she's acquired a certain Spanish look about her; not that I dare actually tell her that. Anyway, last week while out shopping she was approached by a beggar (English) who asked her for a few coins for a cup of coffee. She politely informed him that she had no spare change and carried on walking away. His response was to call her "A miserable old Spanish B\*!t\*d." Big mistake! She rounded on him with such a mouthful of Anglo Saxon it was nearly embarrassing. "You don't normally act like that," was my attempt at calming things down. "It wasn't the fact he called me old," came the curt reply, "It was the fact he thought I was Spanish."

We carried on our business of Christmas shopping and I remarked how quickly this year had passed. Obviously still peeved by the run-in with the beggar, she remarked: "Time flies once you're past 40."

After we reached home, I decided to keep out of her way before I took the blame for the rest of the world's problems (you know, globing warming and such), so I retired to my 'office'. She doesn't go in there that much, saying that it stinks of tobacco and it's untidy, so I'm pretty safe in there.

I sat pondering all the things that had happened this year, such as moving house, a different car and general things that had filled up my 12 months, as well as things that had happened to others that made my existence seem quite boring by comparison.

My attempts at growing melons and vines were confined to the dustbin – they all died. The wife, in her intimate wisdom, said: "You can get a melon from the supermarket for 90 cents, and it's full of seeds."

David Cameron went through all the colours of the rainbow to represent his politics, from the traditional blue to the more Eco friendly green, but he didn't use pink. That colour is reserved for Mr Blair, who has diluted our traditional red flag to a more middle-of-the-road hue.

George Dubya gave us some more memorable quotes, one being: "Russia is a big country... but then so is China!"

The PC brigade were again out in force. One council in Essex wanted to ban Guy Fawkes Night in favour of a Bengali tradition, saying Guy Fawkes was 'old hat'; and on the poster for the new film, 'Queen' there appeared the warning 'Contains the use of one swear word'.

The Spanish Government tried to ban smoking in bars and restaurants. It failed miserably, with bar owners' putting up signs saying 'Smoking permitted'. Meanwhile, the English Government decided that taxation was the answer to everything: 4x4s, polluters, young people binge drinking, bonfire night (too dangerous and frightens our pets – tax 'em).

A pensioner was ejected from a restaurant by the head waiter because she was wearing a pink, hooded cardigan she had bought in Marks and Sparks. Imagine being mugged by a Granny in a pink cardie!

The saddest piece of news I received was from my daughter, Isabel, who informed me of the passing away of Mary Froggatt. Mary would never refuse to help anybody and had a marvellous catchphrase: "No probs". Suzi would ring her and ask if she could do some cooking and 99 times out of a 100 came back the reply: "Yes, no probs". A really lovely person.

FELIZ NAVIDAD (*This is 'Merry Christmas' in Spanish. At least, I certainly hope it is – Ed*)



All at Hollands would like to thank you for your custom over

... the year and we wish you a very merry Christmas



**The Youlgrave Exchange**

**Ladies Mountain Bike**, needs some TLC, free, tel 636992

**Last posting dates for Christmas**

Wed 13 Dec Standard parcels  
 Sat 16 Dec Second Class  
 Tues 19 Dec First Class  
 Thurs 21 Dec Special Delivery  
 Fri 22 Dec Special Delivery with Saturday guarantee

**CHRISTMAS OPEN MORNING  
 YOULGRAVE VILLAGE HALL**

Come along and have a 'free' cup of tea or coffee at our Christmas Open Morning in Youlgrave Village Hall on Saturday 10 December at 10am.

Featuring cake stall, tombola, raffle and Christmas stall. Also, it's another chance to view the 'Our Village' exhibition.

We once more invite existing sponsors to renew their backing, as well as new sponsors (businesses, groups or private individuals), and join the unofficial 'Bugle supporters club'. Youlgrave's free monthly village magazine is paid for entirely by your contributions. Thank you!

**BUGLE SPONSORSHIP 2007**

- **£15** for individuals (name not published unless requested)
- **£20** for local groups, clubs and businesses, including monthly listing with optional contact details

Name .....

Address/tel no .....

For group and business listings: optional one-line description & contact details:  
 .....

*Please make cheques payable to **The Bugle** and send them, together with this form, to Ann Knowles, The Garden House, Fountain Square, Youlgrave DE45 1UW; or leave them with Roger at Youlgrave Post Office. You will be sent a receipt. Thank you for your support!*

**And a happy New Year!**

**REGULAR LOCAL EVENTS**

- |                 |  |                           |  |
|-----------------|--|---------------------------|--|
| <b>Mondays</b>  | Monday Club (Day Centre), Youlgrave Village Hall, 10am-3pm                       | <b>Fridays</b>            | Yoga with Iris Pimm, 9.30-11.30am  |
| <b>Tuesdays</b> | Yoga with Iris Pimm (636341), The Barn, Greenfields Farm, 7-9pm                  | <b>Fridays</b>            | Gentle Yoga, Scout & Community Hall, 3.30pm.   |
| <b>Tuesdays</b> | Youlgrave Bell Ringers practice night, All Saints Church, 7.30-9pm               | <b>Fridays</b>            | Parent and Toddlers Group, Reading Room, 1.15-3.15pm   |
| <b>Mon-Fri</b>  | Youlgrave Playschool, Scout & Community Hall, 9.15-11.45am                       | <b>2nd Mon</b>            | Mobile Library, Greenfields Farm, 9.30am; Alport, 9.45am; Abbeyfield, 10am; Bradford, 10.20am; Rock Farm, Middleton, 10.40am |
| <b>Weds</b>     | Drawing and painting classes, Youlgrave Reading Room, 10am                       | <b>2nd Tues</b>           | Youlgrave WI meetings, Youlgrave Village Hall, 7.30pm  |
| <b>Weds</b>     | Darby & Joan Club, Youlgrave Village Hall, 1.30pm                                | <b>4th Wed</b>            | Confidential Advice Sessions with Matlock & District Citizens Advice Bureau, Youlgrave Medical Centre, 9.30am-12.30pm        |
| <b>Weds</b>     | Bingo, Youlgrave Reading Room, 7.30pm  | <b>Alternate Thurs</b>    | Mobile Library, Grove Place, 2-4.30pm, Holywell La 5-6.30pm  |
| <b>Weds</b>     | Youlgrave Youth Club, Scout & Community Hall, evenings, 7pm                      | <b>2nd Fri of month</b>   | Mobile Police Stn, Holywell Lane, 12.30-4pm  |
| <b>Thurs</b>    | Ecumenical women's Bible study and fellowship, Youlgrave Reading Room, from 10am | <b>Last Tues of month</b> | Youlgrave Parish Council meeting, Youlgrave Village Hall Committee Room, 7.15pm  |
| <b>Thurs</b>    | Beginners Yoga with Iris Pimm, 7-9pm   |                           |  |
| <b>Thurs</b>    | Youlgrave Silver Band, Methodist School Room, 8pm                                |                           |  |

**OPERATION CHRISTMAS CHILD**

We've done it again! The grand total this year is **108 SHOEBOXES**, beating last year's total of 101. Thank you all very much for your hard work. This Christmas we will be bringing a little bit of light and happiness into the lives of 108 children who suffer because of war, poverty, natural disasters and diseases in many countries. If you would like to borrow one of the DVDs or videos which show the delight on the children's faces as they receive their shoeboxes, you will find them in a box on the table in All Saints Church. Please sign your name on the piece of paper, so we can keep track of them. Anyone who has a copy of last year's, I'd very much appreciate its return!

**Recycling of stamps**

Don't forget to put your used stamps in the box on the back pew of the church. Many thanks to 1st Youlgrave Guides who have kindly offered to check and cut round the stamps where necessary. *BS*

**Hand-made wood products for sale**

Youlgrave Woodturner (and newly-qualified Parish Clerk), Matthew Lovell, will be opening his front door from 11am to 4pm on 2nd and 3rd December to display a selection of his wood products. On sale will be various bowls, plates, goblets, boxes, door wedges, and so on. How about choosing a distinctive and quality present for someone special this Christmas? For more details call Matthew on 636151.

**To view all 90 back issues of your favourite village magazine go to:**

[www.thebugle.org.uk](http://www.thebugle.org.uk)

**Hollands Butchers, tel 636234**

## ANNUAL SPONSORS

Bakewell Bridge Car Park (M & D Rhodes)	636453	to the Council, Hillcrest, Middleton by Youlgrave)
Ken and Liz Bartlett, The Stone Barn, Middleton		The Old Bakery, B&B and self-catering accom 636887
L.T. Birds, Joinery & Home Maintenance, free quotations		Maureen Parry, Garden Design, Plans, Planting and
23 Northwood Lane, Darley Dale	07786 434376	Consultation 630064
Brightmore & Shimwell, Plumbing and Heating		F. Parker, Grocer & Butcher 636217
Services	07989 984826/07971 839515	Iris Pimm, The Barn, Greenfields, Alport 636341
Bull's Head Hotel	636307	Pots from France, Bankside 636689/636043
Casa Velas, cosmetics and aromatherapy gifts from		RAOB Lathkill Lodge 636221
Bakewell	0785 5478846	Brian Roche, violin maker and repairer 630099
Ray Caswell, County Councillor, Dovedale Division		Barbara Scrivener, Hands Help Healing 636601
ray.caswell@derbyshire.gov.uk		Shearing Associates, IT wizards 636331
Castle Farm, Bed & Breakfast, Caravans and Camping		Smerrill Grange, Bed & Breakfast 636232
Barn	636746	Trevor & Val Smith, Dubai, UAE
Derbyshire Aggregates Ltd	636500	Jean Stacey, Cake-making & decorative icing 636485
Derbyshire Dales Council for Voluntary Service		Carol & John Sutcliffe, self-catering holiday accomm
- offering support for community groups	812154	at The Cottage, Crimbles Lane 636570
Equity Estates, Commercial and Affordable Residential		Thimble Cottage & The Tweedles, self-catering cottages
Properties	636815	in Youlgrave 07817 900841
Farmyard Inn	636221	Tulips Florist - flowers for all occasions 815816
Harry Holland, Anniscroft Farm, Youlgrave	636246	Kathi Ward, Woodwind instrument repairs 636179
High Standards, Home Laundry Service - personal and		The Wee Dram, specialist whisky shop 812235
domestic, free collection and delivery	636937	John Youatt, Planner, New Road, Youlgrave 636241
George Hotel	636292	Youlgrave Bell Ringers, contact David Camm 636576
Granby House (Youlgrave & District) Society	636123	Youlgrave Bowls Club, contact M. Montgomery 636344
Hollands Butchers	636234	Youlgrave Day Centre (Monday Club) at the Village Hall
Hopping Farm Caravan Park	636302	contact Daphne Jackson 636392
James Bacon, JDB Plumbing & Heating	636637	Youlgrave & District Horticultural Association,
& 07866 365610		contact Leslie Toyne, Treasurer 636484
Knoll Club (Headquarters of the Royal British Legion)		Youlgrave Garage 636943
Peter Knowles, Architect	636362	Youlgrave Methodist Church 636558
Lathkill Books, lathkillbooks@aol.com	636330	Youlgrave Neighbourhood Watch 636022
Lathkill House, Bed & Breakfast	636604	Youlgrave Parish Church 636285
www.lightingforgardens.com	01462 486777	Youlgrave Parish Council 636151
Long Rake Spar Company Ltd, stockists, importers and		Youlgrave Playschool - nursery education for
exporters of decorative aggregates	636210	2-4 year olds 636536
Matthew Lovell, Christmas Cottage, Church Street		Youlgrave Post Office 636201
- wood-turned crafts and gifts	636151	Youlgrave Silver Band 636362
Patrick McLoughlin MP, House of Commons		Youlgrave United Football Club 636483/077230 34320
London SW1A 0AA	01332 558125	Youlgrave Village Hall 636084
Steve Marshall, registered osteopath, Peak Osteopathy		Youlgrave Waterworks Limited
	636997	Youlgrave Wesleyan Reform Church 636603
Middleton & Smerrill Parish Council (John Warren, Clerk		Youlgrave Women's Institute 636353

### Saturday Waste Collection

**ALPORT & YOULGRAVE: 9 Dec (next: 13 Jan)** Alport: 7.45-8am, Youlgrave Sch: 8.05-9.30am, Bradford & Mawstone Lane: 9.35-10.10am, Grove Place - Police Ho: 10.15-10.30am/far end: 10.30-10.45am

**MIDDLETON-BY-YOULGRAVE: 2 Dec (next: 3 Feb)** The Square: 9.45-10.45am

All correspondence to Andrew McCloy (Editor), Englemere, Brookleton, Youlgrave DE45 1UT, tel. 01629 636125, e-mail andrew.mccloy@btopenworld.com. Contributions for the next issue to arrive by the **15th of the month**. The views in this publication are not necessarily those of the editorial team. www.thebugle.org.uk. Printed by Greenaway Workshop, Hackney, Matlock (tel. 734089).