



The

Bugle



A chance to blow your trumpet for the villagers of Alport, Middleton and Youlgrave

No. 23

March 2000

HAS SPRING SPRUNG YET?

As February draws to a close the weather is keeping us all on tenterhooks as to whether we've seen the back of the winter or not with beautiful blue skies one day then a blanket of snow the next. It seems to have fooled even the spring daffodils into putting in an appearance.

In the February edition we published the organisations' contact list and unfortunately there were some errors with the phone

numbers, namely: Mildred Bacon, Women's Fellowship - **636729**; Penny Edmonds, Guides - **636361**; Andrea Harrison, School Governors' Clerk - **636289** and the name for the Tennis Club should read **Peter Cork - 636887** not Peter Cook. I apologise if this has caused any problems.

You'll notice that there aren't many forthcoming events listed on the back page. I'm sure this isn't because you're not doing anything but you are forgetting to tell the 'Bugle' about things. We do a quick tour of the notice boards before publication, but you need to let us know as soon as you arrange an event because by the time the

posters go up, we've already gone to press for the month. You can phone or e-mail me (Emma, details at the bottom of the page) or Ann (tel. 636362). The cut-off date for copy is the 14th although we can usually squeeze the forthcoming events in as late as the 20th

Talking of telephone numbers, you'll notice that, as warned, the sponsor details for 2000 have been updated. I've included the form for one last time to make things easy but please feel free to send your money and details to us anytime.

JACK AND THE BEANSTALK

This was the finest Pantomime for years, in the best tradition of the art.

It is invidious to mention names from such a talented cast and company when the standard was so high, but I'm going to.

Mary Froggatt is the Dame Judi Dench of Pommie panto, versatile and growing into different parts as the years go by. She can be relied on to complement any song with her fine voice.

Martin Hill was almost Laughtonesque in his portrayal of Grusum and displayed excellent comic timing in his double act with an impressive Jeremy Bacon.

What can one say of Phil Wildbore's Giant? He was superbly grotesque in a combination of Herman Munster, Beetlejuice and Mr. Blobby. His face is so full of expression that he can cause collapse into helpless laughter with just a glance.

Melissa Seears did well with limited opportunity and performed the 'Les Mis' song very well but the best voice on show belonged to Ursula Kneller. Her 'Sing A Rainbow' in a minor key indicates that she may have a great future in this department.

Becky Measures is what a Principle Girl should be, tall and handsome with bags of personality and those legs sent an old man to bed very happy!

Mick Partridge has real talent. His Dame follows in a long tradition from Norman Evans to Mighty Fine and

Les Dawson with undertones of Frankie Howerd. He knows how to milk an audience and has comedic qualities that everyone can identify with.

The scenery and costumes were first class, as was the music, under the direction of Nick Stacey. Anne Croasdell as Choreographer and player of cameo parts showed a developing versatility.

This was a proper panto. The jokes were predictable but that is half the fun and there was innuendo and implied vulgarity as there should be. The songs were mostly populist and singalong, again as they should be and it all left me wanting more and already looking forward to next year.

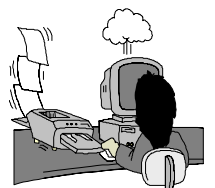
Well done Jan!! We missed you.
Rupert Puttingham-Down, Theatre Critic of the Bugle.

Published by Bugle Publications. Editor Emma Youatt, Square House, Middleton by Youlgrave, Bakewell, Derbyshire. DE45 1LS. Phone **01629 636775** (please phone first before faxing), e-mail e.youatt@virgin.net

Contributions to arrive by the 14th each month to Square House or to The Post Office

The views in this publication are not necessarily those of the editorial team.

Printed by **Reprint** Bradford Road, Youlgrave 636410 as a community service free of charge.



Abbeyfield's Granby House is 10 years old this month

SPRING BIRDIN

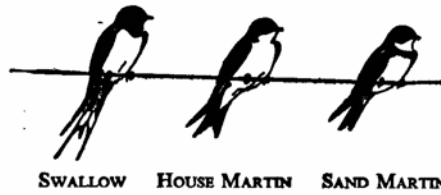
It seems that the discussion on Kingfishers was well received so it occurs to me that, with the approach of Spring, we should turn our thoughts to the many avian visitors we shall soon be welcoming.

Like many country folk, I have for years kept records of the arrival dates of migrants. This month you may be fortunate enough to see the Goosander, which prefers freshwater rivers with a ready supply of trout which it catches by diving and swimming under water. It has been reported on the third dam on Bradford Dale for the past few years whist on its way north, probably to Scotland. They are very exciting visitors but I think we should start by recording the songsters which are part and parcel of our local countryside.

Round about March 20th I will be listening for the Willow Warbler and wondering if I will hear it before the Chiffchaff. Once you have recognised their songs you will never forget them. I would like to suggest that you find a friend as quiet as yourself when you go on country walks and actually listen to the birdsong. My two boys were my greatest companions. I trained them not to shout when they needed to contact me, even if we were 100 yards apart, but to use the call of the Chiffchaff (they repeatedly call their own name, which is easy to mimic.) The second piece of advice is from a favourite poem of mine: "Leisure" by WH Davies, It begins "What is this life if, full of care, we have no time to stand and

stare?" Read the poem for yourself, it's not very long and take time out to stand and stare.

Village folk tend to lump Swallows, House Martins, Sand Martins and Swifts all as "Swallers" but you I hope will sort them out. The long forked tail, chestnut breast and nesting habit of the Swallow of choosing usually the inside of a low building, separate it from the House Martin with their familiar nests under the eaves of houses. The Sand Martin lays its eggs in flea ridden burrows at the end of tunnels normally in the sandy face of a Gritstone quarry and is not as common. These three visitors arrive in April but the Swift, or "squealer" as it is called locally, delays until the first two weeks in May and



leaves earlier in the middle of August. A popular place for the nests is the eaves of the Primitive Chapel and they rear two broods of three babies and reputedly perform all functions on the wing.

It may be that my hearing is getting worse but I have not heard the cuckoo for several years. Let me know if you hear it but be careful!! I have a story of a naturalist friend of mine who heard it in March – it wasn't really the cuckoo but old George K of Alport up to his tricks. Beware of imitations.

I hope that, like me, you feed the birds in your garden. They get quite adept at alarm calls and avoiding the attentions of my son's cats.

At present I have two cock Blackbirds with one hen in the background. There is going to be trouble there!

Mr John Fraser

As reported in The Link, former pupils, friends and colleagues were saddened to learn of the death of Mr. John Fraser, previous Headmaster of Youlgrave All Saints' C.E. (Aided) School. He died on 19th December 1999 in Clevedon, Somerset, after a long illness.

John Fraser spent five and a half years in India during the war and was then in the Colonial Service in Malaya until independence in 1957, after which he trained as a teacher at Matlock.

He was appointed Headmaster of Youlgrave C.E. Junior School in January 1969 and retired in July 1981. During that time there were changes in the school - most notably the amalgamation of the Infant and

Junior Schools to form the single Primary School. The new kitchen-dining extension was also completed.

He took a keen interest in village life and really enjoyed living in Youlgrave. He was chairman of the Village Hall Management Committee for 10 years and worked enthusiastically for the Tennis Club. He was a J.P. for several years.

His sincere interest in his pupils, their progress and welfare, continued long after they left school. To quote from his son David's tribute to his father, he "carried through his life a sense of duty and self-sacrifice which put other people, and pre-eminently the children, before his own self interest".

Our sympathy is extended to his wife, Mary, his sons Alan, Andrew and David and their families. MH

There are also pairs of Robins and Hedge Sparrows, Chaffinches, far too many Collared Doves and, I'm pleased to say, a pair of Wood Pigeons, although in arable areas these are regarded as pests. I also expect visits from Bullfinches and Greenfinches when the fruit trees begin to blossom.

I have in my garden several Daphne Mezereum bushes. I have grown them over the years from berries from two bushes which I inherited when I moved to my present house in 1952. I have to make up my mind these days as to whether I let the Greenfinches that nest in my high privet hedge have the berries or whether I sow more seeds. The finches inevitably win. I've also seen the odd Jenny Wren. I once counted five Wrens wintering in a neglected Blue Tit box. I have not seen Great Tits yet this year but I'll soon be hearing their familiar call of "Teacher, Teacher". They do occasionally drop in for a helping of peanuts hanging on the clothes post but their cousins the Blue Tits usually see them off.

All these things are to look forward to and aren't the nights getting out?

As they say in farming circles, we're all waiting for Dr. Green!!

Old Joe

YOULGRAVE BROWNIES

The girls at 1st Youlgrave Brownies want to establish contact with any people who have been involved with Youlgrave Brownies over the last 30 years.

As the Brownies want to have an open evening sometime later this year they would like to gather as much memorabilia as possible. So, if you have old photographs, uniforms, books or have a tale to tell, please contact **Edwina Edwards on 636491.**

Youlgrave also has Rainbows for younger girls (5-7 years). The Guider, Louise Hancock and helpers, Karen Smith, Christine Corran and Angel Andrew run a unit for 12 girls. A few spaces are available, so contact **Louise (tel. 636455) - after 6.40pm.**

Granby House is a Local Charity that is run with the help of volunteers.

Forthcoming Events

**Could your event do with more publicity?
If so send us the details and we'll list them here.**

- Friday 10th March** 'New Reading Room' meeting & AGM.
The Reading Room, 7.30pm.
- W/C 17th April** Easter Drama Sessions for Young People for the 'Community Play'.
Contact Maggie Ford for details (tel. 636189).
- Wednesdays** Diane Kettle's Life drawing classes. Middleton Village Hall, 7.30pm.
- Fridays** Yoga with Iris Pimm at Greenfields Farm Barn (tel. 636341), 9.30am.
- Fridays** Yoga for over 50's. The Scout and Community Hall, 3.30pm.

**Please let us have more details of events for the next edition.
The cut-off date is the 14th.**

**The Publishers accept no liability for the accuracy of the
information given.**

Easter Drama Sessions

During the week of April 17th, Maggie Ford will be running exciting drama sessions for Primary and Secondary School children and young people. We are looking for talented youngsters for the Community Play, which will be performed in Winstar in the summer of 2001. The sessions will be **FREE** and open to all who might be seriously interested in taking part in the play.

Please contact Maggie for details (tel. 636189).

Made of Clay Video Update

We now have nearly 10 hours of excellent material including the 1937 Youlgrave film. The main part of the editing will take place in March/April, which means hopefully the video will be ready by the end of April.

MR MIDDLETON'S GREEN GARDENING

March 2000 - At this time of year the garden looks bleak and empty, but there's a surprising amount of things quietly getting on with growing even through the winter. The thin shoots of garlic and Japanese onion sets that I planted in November are now visible from the house - no more peering into the compost mulch trying to decide if it's a new leaf or just a bit of twig poking up.

The leeks and brassicas have weathered the winter winds (I have to cut them by torchlight, as I never remember to get them in before the sun sets). The cabbages got chewed by caterpillars as usual in the summer, but I don't bother trying to stop them. By this time of year they are gone, and the lacy remains of the leaves they devoured are the outer leaves I would discard anyway.

It's time to start planting again too. I've just sown a pinch of lettuce seeds (Mixed Leaves) in a pot on the kitchen window sill. They'll be pricked out into pots and kept in the greenhouse until the ground is warm enough and they are big enough to handle a slug attack. I sow once a month to keep them coming, and the last lot go out under cloches in October, and sit doing nothing until March, when they plump out and are ready for Easter.

Email: Middleton2@.bluecarrots.co.uk

From the Cookhouse Door

Banana Walnut Cake

Ingredients

Cake - 5 oz self raising flour, $\frac{1}{4}$ tsp. baking powder, 1 ripe banana, 2 oz soft butter or margarine, 1 egg, 5 oz sugar, $\frac{1}{2}$ tsp. vanilla essence, $\frac{1}{4}$ tsp. salt

Topping - 1 oz demarara sugar, 1 oz chopped walnuts

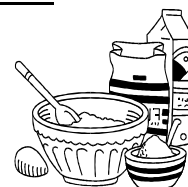
Method

Put the egg, banana, sugar, butter, vanilla essence and salt in a liquidiser and blend until smooth.

Put the flour and baking powder in a bowl and pour over the banana mixture and combine gently with a metal spoon.

Place in a 1 lb. loaf tin, greased and lined, and sprinkle the walnut sugar topping on it.

Bake for approximately 40 minutes, gas mark 5, 375°F.



ANNUAL SPONSORS

Beechwood Estates, Residential and Lettings	- - - -	580670/814092
Viv Butler, Meadow Cottage Tea Garden.	- - - -	636523
Castle Farm, B&B, Caravans & Camping Barn	- - - -	636746
The Farmyard Inn	- - - - - - - - - - - - - - - - - -	636221
Hollands Butchers	- - - - - - - - - - - - - - - - - -	636234
The Knoll Club, Youlgrave Royal British Legion	- - - -	-
Doug Oldfield, Handiman & Sweep	- - - - - - - - - - - - - - - - - -	636797
Peter Knowles, Architect	- - - - - - - - - - - - - - - - - -	636362
Lathkill Entertainment, Murder Mystery Evenings etc.-	- - - - - - - - - - - - - - - - - -	636849
Andrew McCloy, Benchmark Books	- - - - - - - - - - - - - - - - - -	636125
A Murray, The Wee Dram, Bakewell	- - - - - - - - - - - - - - - - - -	812235
Peak Rural Welfare Rights Service 'Benefits Advice'	- - - - - - - - - - - - - - - - - -	0800 214233
The Post Office	- - - - - - - - - - - - - - - - - -	636201
SR & JK Roper, Builder & Joiner	- - - - - - - - - - - - - - - - - -	636498
Barbara Scrivener, Reflexology and Massage	- - - - - - - - - - - - - - - - - -	636601
Martin Sydee, Painting & Decorating & Renovation	0835 228220/	636013
Youlgrave Abbeyfield, Granby House	- - - - - - - - - - - - - - - - - -	636484
Youlgrave & District Horticultural Society	- - - - - - - - - - - - - - - - - -	636151
Youlgrave Neighbourhood Watch	- - - - - - - - - - - - - - - - - -	636611
Youlgrave Parish Council	- - - - - - - - - - - - - - - - - -	-
Youlgrave WI	- - - - - - - - - - - - - - - - - -	-

For further details, including edition sponsorship, telephone Ann (tel. 636362).

Bugle Sponsorship

Yes, I would like to sponsor 'The Bugle' for 2000. I enclose £10. I would/would not like to be listed in every edition. Please note that sponsors' details will not appear after the February edition for those that have not re-subscribed.

Name: _____ (please print clearly)

Details: _____
(up to 50 characters total, including name)

Telephone number: _____

Please make cheques payable to 'The Bugle' and send all payments and details to Ann Knowles, Garden House, Fountain Square.

For further details, and edition sponsorship, please contact Ann (tel. 636362) or Emma (tel. 636775).

For further information about Granby House contact Leslie Toyne on 636484