



Bugle

A chance to blow your trumpet for the villagers of Alport, Middleton and Youlgrave

No. 22

February 2000

HAPPY NEW YEAR

Well, the transition from 1999 to 2000 was a smooth one without any serious manifestations of the dreaded bug. Then we all started coming down with a flu-like bug of the other kind and the New Year and Christmas celebrations become a distant memory.

As promised, we have printed an updated version of the Local Organisations contact details. Ann has put in a lot of work and has made some updates already but, if you see something that has changed, please let us know for future publications.

We're really pleased that a number of our sponsors have renewed their subscription

and that some new sponsors have contacted us but please remember, after this month those who haven't done so already won't be listed until we receive their slips.

We're also very happy with the number of new & existing people who have written for us - thank you very much. To try to keep the newsletter fresh, however, we'd like to encourage others too. Copy can be dropped off with me at Square House, Middleton; with Ann at Garden House, Fountain Square, Youlgrave or Roger Easton at the Post Office, who is happy to pass things on to us.

Finally, the Editorial Team would like to congratulate Marjorie and Bill Shimwell on their Diamond Wedding Anniversary, which was 20th January. They received a card from the Queen!!!

After School Club

Funding is currently available to assist in the establishment of an after school club in the village. This would provide children with supervised activities either before or immediately after the school day and, depending on need and demand, could operate from, say, 8am until the start of the school day and again from close of school until 5.30pm or 6pm.

Would you be interested in this facility?

It can only go ahead if a sufficient number of parents register an interest. A meeting has been arranged to discuss the matter in detail at 7.30pm on Wednesday 9th February at the school. A note will be sent to all parents. Please attend if at all possible because it will only be set up if we can demonstrate that a sufficient number of parents is committed.

PANTOMIME SEWING TEAM

Village pantomime time is with us, which is the culmination of months of hard work for many people.

The SEWING TEAM is one such group of people, and it is admirably lead by Mrs Judy Birds.

The work, which is voluntary, commences in September/October with sketches and ideas being put forward. The next stage is the purchase of materials and

the searching out or making of any necessary patterns. Different seamstresses are allocated certain members of the cast to dress and they usually work at home.

Costumes from a previous show



All the changes that the Chorus require are

executed by Judy and her gallant team of helpers. It can be a very challenging, but very rewarding, time when one can show one's initiative and it is to be recommended to any seamstress who is willing to 'have a go'.

There is a team who sort out and make head-dresses and hats, and another to select the right footwear.

The Sewing Team is just one part of the work that goes on to help put the show on the stage and make it a colourful spectacle.

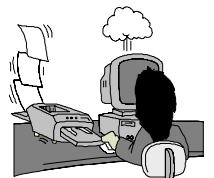
If you'd like to help Judy, or any of the Pantomime 'Behind the Scenes' teams, in future productions, please contact The Producer, Mrs Jan Wilson (tel. 636284).

Published by Bugle Publications. **Editor** Emma Youatt, Square House, Middleton by Youlgrave, Bakewell, Derbyshire. DE45 1LS. Phone **01629 636775** (please phone first before faxing), e-mail e.youatt@virgin.net

Contributions to arrive by the 14th each month to Square House or to The Post Office

The views in this publication are not necessarily those of the editorial team

Printed by **Reprint** Bradford Road, Youlgrave (tel. 636410) as a community service free of charge



The Bugle is Sponsored by Hollands Butchers Tel. 636234

Going Batty

There's one group of local residents which is not well known in the area but which lives a lot closer to us than many of us might guess. Anyone who walks along Bradford Dale at dusk during the summer will have encountered them as they perform their acrobatic stunts over the water, along the paths or above the trees. The smallest of them weighs less than a 2p coin and the largest as much as three £1 coins. These smaller members of our local community are, of course, the bats.

Although attitudes are changing, there are still many superstitions and apprehensions about these small creatures. Such fears often lead to persecution, which is why the law strictly protects all bats and the places they inhabit (roosts). None of the species found in Britain spread disease, chew wiring, suck blood or build nests as is commonly perceived. There are currently 15 different species in Britain, five of which are confirmed resident in and around Youlgrave.

Bats belong to the same group of animals as we do because they give birth to live young. A female usually only produces one offspring between June and July in what are known as 'maternity roosts' which start to form in the late spring. In some species, the males will find their own places to live during the summer. These roosts disperse by the autumn and both

the males and females then look for their winter residence where they can go into hibernation. Although they can become active during warmer winter periods, waking a bat during hibernation can be a matter of life or death because they are forced to use precious fat reserves, which act as a source of energy during the long winter months. Even the breath and body heat of humans can be enough to rouse bats from their slumber.

All British species feed on insects, which are particularly plentiful around the weirs and trees of Bradford dale. They detect them through using a type of sonar system, which analyses the echoes from very loud sounds that the bats produce. Some bats can shout very loudly indeed and the record is held for 120 dB, which is equivalent to a pneumatic road drill! The reason why we are not deafened when we go for a walk in the evening is because they use a higher frequency than most people's hearing can detect. They avoid damaging their own hearing through a special ear muscle. These signals allow the bat to determine the speed, size, species and direction of movement of their insect prey. They also have very good eyesight in addition to this sophisticated sonar system.

Next time you take a walk at dusk on a summer evening, give a thought for these incredible creatures. If you are lucky enough to share a house with them, then welcome them as honoured guests rather than mortal

enemies. We have nothing to fear from these gentle and fascinating creatures. Our choices and attitudes have profound consequences on wildlife and it is a sad fact that many species that were once common are now seriously threatened because of those very choices and attitudes.

Dr Roger Catchpole is a Conservation Officer in English Nature's Peak District and Derbyshire Team, which is based at Over Haddon. He lives in Youlgrave and can often be seen gazing up at the early evening sky.

Race Night Friday 11th February



Do you fancy a night at the races? Come to the Village Hall on Friday 11th February and enjoy a pea and pie supper while following the favourites round the course. There will be eight races with eight horses in each race. You can name a horse and the winning owner receives a bottle of wine. Children can be nominated as a jockey and the winning jockey also wins a prize. The Youlgrave equivalent of a tote will be available and it is all in a good cause – **Youlgrave School Funds**.

Come and have a great night out and support a good cause. Tickets: Adult £3, Child £2. Details and tickets are available at the school, the local shops and from any school governor.

KINGFISHER WATCHING

Dear Bugle,

As a 'local with a long memory', I could not refuse your invitation to give my experiences of a long life spent in our lovely dales. Sorry to disappoint you, but the Kingfisher has never, to my knowledge, nested in Bradford or Middleton Dale. They need a deep edge to the river into which they tunnel and, at the end of the tunnel, lay their eggs in a smelly nest of regurgitated bones - not very nice for such a beautiful bird. They do nest on the Derwent and Wye and don't visit us much in the nesting season, too busy I guess, but, in the "back-end" of the year seem to make regular but brief visits to our area. Might I suggest that, if you haven't got a good camera already, then you ask Santa to bring you one - colour film of course. All we had in my day was the No.2 Brownie (Kodak) - it's still upstairs somewhere. I have a lasting memory of

taking my granddaughters for a walk on a cold winter's morning when everything was covered with rime (hoar frost). We had walked down Brookleton and were heading for Bradford when a Kingfisher dropped on to the top of a gaunt old thistle, probably 4 - 5 feet high. We stood entranced as he suddenly dived into the stream and rose again to his thistle perch with a fish and, with a shake of his head turned the fish (a minnow) from the horizontal position, to swallow it head-first. It was a classical performance.

As for 'Frank', that is our family name for the heron for he calls it out most times when he floats slowly up the dale. Sadly we have no herons around - there was one in Taddington Dale but they have fish - keepers in that area and "life gets tedious doesn't it?". I always think that one of my best lessons was delivered when I was given a dead heron which had broken its neck flying into power lines at Roller. We measured it - weighed it after guessing its weight and did all sorts of wonderful work - children wrote marvellous stories but I insisted that

they all had a happy ending - not like our particular 'Frank'. There was a follow up too - we had a nature walk a week or so later after I had reconnoitred during an evening walk. The class sallied forth with cigar boxes (minus bases) and a supply of Plaster of Paris and some mum's mixing bowl. I had found on my walk the place where Frank had stood patiently on the mud waiting for his supper. The girl who had brought her mum's mixing bowl obviously had to mix the plaster and the children who had brought cigar boxes (I didn't realise how many Dads smoked cigars) were allowed to place them over the footprints. Only two boys went 'over the shoe-top' in the mud so they were left to guard our efforts while the rest of class went 'flowering' (searching for new species, as yet, not recorded).

The expedition was so successful that my Cub pack demanded a repeat performance. Do any of you 'lads' remember it?

J W Shimwell

Mild Cheddar Cheese £1.55/lb Gammon Steaks £1.55/lb

MURDER MOST FUN

Whether it's Colonel Mustard in the drawing room with the candlestick, or Miss Scarlet in the library complete with smoking revolver, the fact remains that there are few of us who, at some time or other, have not enjoyed the excitement of a 'Who Dunit?' Well, for all you budding Miss Marples and Poirots out there, here is a chance to really try your hand at mystery – Lathkill Entertainment Ltd.

Established in 1993 under the name of 'Centre Stage Productions', the company specialises in murder or theme evenings, using life-like performances that will leave you in suspense until the very end of the

evening.

Whilst specialising in murder evenings, murder grams and house murders, Lathkill Entertainment can also stage a wide selection of theme nights. So if you have a hankering to be a Wild West cowboy, a shining knight at your very own

A 'Murder Scene' as created by



Lathkill Entertainment
medieval banquet or a Dick Tracey in

Prohibition America, this is right up your street. All theme nights come with a theme band or theme disco.

Nothing it appears is too fantastic – they even offer themed weddings, including, for the more-adventurous bride, weddings on horseback – just like Maid Marion!

Whatever the theme, Lathkill Entertainment is confident it can deliver your dream evening through its on-site design team and manufacturing facilities. Prices start from £250 for a House Murder, to approx. £1,800 for a theme night.

So, should you spot Marilyn Monroe, Elvis or Al Capone on a Saturday night, don't panic you're not seeing things – chances are they're off to a great party! For more information about Murder & Theme Evenings, Theme Weddings and Murder Grams, contact Tracey (tel./fax 01629 636849).

Alport, Middleton and Youlgrave Organisation Contacts List

Abbeyfield	Lesley Toyne	636484	Monday Centre	Daphne Jackson	636392
Badminton (Tues 2.0)	Avril Naybour	636151	Mother & Toddler	Vivian Tabbener	636861
Band	Peter Knowles	636362	Neighbourhood Watch	Bridget Ardley	636611
Cubs	Trevor Robinson	734648	(Middleton)	Michael Colin	636451
Bellringers	Mary Bartlett	636043	Pantomime	Margaret Gladwin	636558
Bowls	Peter Rowland	636467	Pigeon Club	Vincent Webster	636709
British Legion (men)	David Robinson	636456	Rainbows	Louise Hancock	636455
British Legion (women)	Mavis Charlesworth	636069	Reading Room	John Wragg	636002
Brownies	Edwina Edwards	636491	Recorders	Ann Knowles	636362
'Bugle'	Emma Youatt	636241	Quilting Workshop	Dorothy Jerman	636027
Bulls Head darts etc.	Mark Atkinson	636307	Save The Children	Sue Burgess	636659
Carnival	Sylvia Birds	636636	School Association	Jane Charlesworth	636408
Christian Aid	Irene Goodwin	636627	School Governors Clerk	Andrea Harrison	636603
Children's Sunday Club	Elizabeth Lomas	636581	Scouts	Rob Poyser	01773 853604
Church Choir	Jan Wilson	636248	Scout Hall	Jayne Goodwin	636692
Church Music Group	Barbara Scrivenor	636601	Wesleyan Reform . . .		
Cricket	Nick Asquith	636656	Sunday School	Sally Shimwell	636603
Derby & Joan	Minnie Wilson	636430	Wesleyan Reform . . .		
Derbys. Wildlife Trust	Roy Stubbs	636388	Women's Fellowship	Sally Shimwell	636603
Farmyard Inn, darts etc.	Eric, Hilary & Heather	636221	Table Tennis	Michael Shimwell	636305
Football	Sue Dawson	636038	Tennis	Peter Cooke	636887
Football (under 14s)	Anthony Wragg	636476	Village Hall	Margaret Gladwin	636558
Furniture Restoration	Sue Burgess	636659	Water Works	R.A. Stead c/o 'Ashington Denton',	
George Hotel darts etc.	George Marsh	636292		84 Queen St Sheffield S1 2DW	
Guides	Penny Edmonds	636381	Welldressings	Peter Pimm	636341
Horticultural Society	Lesley Toyne	636484	Wingfield Folk Band	Ian Weatherley	636350
Knoll Club	G. Ollerenshaw	636571	Women's Fellowship	Mildred Bacon	636380
Leprosy Mission	Doreen Blackwell	636553	Women's Institute	Jennifer Easton	636201
'Link' Church Magazine	Judith Taylor	636492	Youth Group (10 -14s)	David Figg	636234
Meals on Wheels	Bridget Ardley	636611	Youlgrave Parish Church	Ossie Post	636285
Methodist Church Primitive	Tom Gladwin	636558	Youlgrave Parish Council	Ingrid Newman	636084
Middleton Church	Ossie Post	636285			
Middleton Parish Clerk	Pat Warren	636037			
Middleton School of . . .					
Drawing & Painting	Diane Kettle	636763			
Middleton Village Hall	Eileen Brocklehurst	636739			

The details on this list are based on the last edition published in 1998. If there are any changes, new societies, etc., please tell Ann Knowles, Garden House, Fountain Square (tel. 636362).

English Pork Chops £1.25/lb Minced Beef £0.98/lb

Forthcoming Events

- 25th January to 5th February** Youlgrave Pantomime, 'Jack and the Beanstalk'. Tickets from Mrs M Gladwin (tel. 636558), before 9pm.
- Saturday 26th February** 'Sixties' evening. Youlgrave Village Hall, 7.30pm. Live music, dancing and bar. Tickets £3.00.
- Wednesday 9th February** 'After School Club' discussion meeting. Youlgrave School, 7.30pm.
- Friday 11th February** Race Night, raising funds for Youlgrave School. Youlgrave Village Hall, 7.30pm.
- Wednesdays** Diane Kettle's Life drawing classes. Middleton Village Hall, 7.30pm.
- Fridays** Yoga with Iris Pimm. Greenfields Farm Barn (tel. 636341), 9.30am.
- Fridays** Yoga for over 50's. The Scout and Community Hall, 3.30pm.

Please let us have more details of events for the next edition. The Publishers accept no liability for the accuracy of the information given.

Bugle Sponsorship

Yes, I would like to sponsor 'The Bugle' for 2000. I enclose £10. I would/would not like to be listed in every edition. Please note that sponsors' details will not appear after the February edition for those that have not re-subscribed.

Name: _____ (please print clearly)

Details: _____
(up to 50 characters total, including name)

Telephone number: _____

Please make cheques payable to 'The Bugle' and send all payments and details to Ann Knowles, Garden House, Fountain Square.

For further details, including edition sponsorship, telephone Ann (tel. 636362) or Emma (tel. 636775).

Employment Opportunities

- Assistant wanted to help with serving meals, clearing away and some cleaning duties at Granby House, Youlgrave. Hours: 12.15pm to 3.15pm Monday, Wednesday, Friday and alternate Saturdays. Pay £4.15 per hour (£4.25 from 1/2/00) plus lunch and holiday pay.
- Relief Resident Housekeeper to cook and serve attractive, nutritious lunches and high teas. Duties include organising the other staff and making sure the residents are happy and well cared for. Patience, total unflappability and a good sense of humour are essential qualities for this post. Your hours of work will be 8.00am to 1.15pm and 3.15pm to 6.15pm each working day and to be on call to respond to residents' alarm calls if necessary between 6.15pm and 8.00am each working night. You must be available in the house during the night and a bedroom with ensuite shower room is available for your use. We are looking for someone to work 3 days and nights a week on a rota basis. The working days are :Week 1 Sunday, Monday & Tuesday; Week 2 Monday, Tuesday & Saturday.

If you would like more details or are interested in being considered for the jobs please telephone 636836. **The house operates a no smoking policy.**

From the Cookhouse Door

Quick Lunch Dishes

Per Person,

1 round of toast - topped with:-

- Sliced smoked ham, pineapple ring and topped with grated cheese.
- Sliced mushrooms and spring onions, which have been softened in a pan with butter, salt & pepper, then topped with grated cheese and slices of tomato. Put under the grill as above.
- Spread toast with ginger marmalade, slice a banana lengthways and put on top. Dot with cream cheese and sprinkle with demarara sugar. Put under the grill as above!



ANNUAL SPONSORS

Dave Axon, DKFL Books and Software	- - - -	650628	Eleanor Pilkington, Peak PR	- - - - -	636871
Beechwood Estates, Residential and Lettings	- - - -	580670/814092	Iris Pimm, Greenfields Farm Barn	- - - - -	636341
Bradford Dale Retreat	- - - - -	636550	The Post Office	- - - - -	636201
Viv Butler, Meadow Cottage Tea Garden.	- - - -	636523	Pots from France	- - - - -	636043/636689
Ray Carter, Joiner	- - - - -	636269	QC Curtain Company	- - - - -	636161
Castle Farm, B&B, Caravans & Camping Barn	- - -	636746	SR & JK Roper, Builder & Joiner	- - - - -	636498
The Druid Inn, Birchover	- - - - -	650302	Barbara Scrivener, Reflexology and Massage	- - -	636601
Equity Estates, Commercial Properties	- - - - -	636815	M&D Shimwell, Haulage, Sand, Cement & Blocks	- -	636305
The Farmyard Inn	- - - - -	636221	Martin Sydee, Painting & Decorating & Renovation	0835 228220/	636013
Eric Goodwin, Plasterer & Tiler	- - - - -	636627	Greg Wilkinson, GK Electrical Services	- - - - -	636799
Hollands Butchers	- - - - -	636234	John Youatt, Planning Consultant	- - - - -	636241
The Knoll Club, Youlgrave Royal British Legion	- -	-	Youlgrave Bowls Club	- - - - -	636467
Peter Knowles, Architect	- - - - -	636362	Youlgrave Cricket Club	- - - - -	636656/636571
Lathkill Entertainment, Murder Mystery Evenings etc.-	- - - - -	636849	Youlgrave Garage	- - - - -	636943
Andrew McCloy, Benchmark Books	- - - - -	636125	Youlgrave Neighbourhood Watch	- - - - -	636611
A Murray, The Wee Dram, Bakewell	- - - - -	812235	Youlgrave Parish Council	- - - - -	-
Doug Oldfield, Handyman & Sweep	- - - - -	636797	Youlgrave Silver Band	- - - - -	-
Peak Rural Welfare Rights Service 'Benefits Advice'	-	0800 214233	Youlgrave WI	- - - - -	-

Annual 'Bugle' sponsorship is only £10. Please contact Ann Knowles (tel. 636362) or Emma Youatt (tel. 636775) for details.

Hollands Butchers Free Deliveries Wednesdays and Fridays Tel. 636234