



The

Bugle



A chance to blow your trumpet for the villagers of
Alport, Middleton and Youlgrave

No. 21

December 1999



MERRY



CHRISTMAS

Well, December's here and 'The Bugle' celebrates the completion of its second year of publication. We're very pleased to have kept the newsletter alive for as long as this and look forward to an equally successful third year. The Editorial Team would like to thank everyone who has written for us, not to mention our army of deliverers we couldn't keep going without you!

As some readers will remember, we published a list of clubs and organisations in the first 'Bugle' in

January 1998. To keep everybody up to date, we'd like to do this again in the next edition. So, if you're responsible for recruitment at the Bowls or Backgammon Club and were wondering how to boost your numbers, contact either me (see the bottom of this page) or Ann Knowles (636362) with your details. We especially need to hear from new clubs and those that have new contact details.

The next regular 'Bugle' we publish will be February 2000, with a cut off date for copy of 10th January 2000. Look out for 'Bugle 2000', our Millennium celebration publication, in January.

I speak for everyone on the Editorial Team when I wish you a happy Christmas and a prosperous

New Year. We look forward to hearing your thoughts, memories and opinions in the new Millennium.

It's that time of year, of course, when we're after your money again. 'Bugle' sponsorship is only £10 per year. Please send cheques, made payable to 'The Bugle', to Ann Knowles at Garden House, Fountain Square, Youlgrave. If you're a new sponsor or if you'd like to change your entry, please include your preferred wording for the 'Annual Sponsors' box (see form on the back page). We'll publish the list again as it is in January but after that sponsors who don't re-subscribe won't be listed.

Youlgrave Pantomime 2000

Our production this year of '*Jack and the Beanstalk*' is growing nearly as fast as the beanstalk itself! We have a very enthusiastic chorus of young people, who are dancing, singing and acting to the manner born.

The cast, headed by Mick Partridge as Dame Trout,

Mary Froggatt as Millie, Becky Measures as Jack and Chris Watson as Wally have been rehearsing twice-weekly since October amid much hilarity.

Judy Birds is leading the wardrobe department and already many costumes are hanging on the rails. Ian Colman and Mick Roper are heading the stage team and Diane Kettle and John Marple have designed fairytale scenery, which has been appearing before our eyes as if by magic!!

Musical Director, Nick Stacey, has arranged some lovely music and the dance routines are

imaginatively choreographed by Anne Croasdell. As well as playing a cameo role, Assistant Producer, Dorothy Jerman, has been teaching character acting.

Oh, and by the way, the Giant is played by . . . well, why don't you come and see for yourselves!

We look forward to seeing you there . . . oh yes we do!!

Jan Wilson, Producer

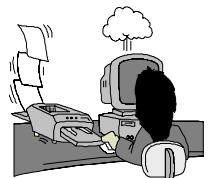
Tickets for '*Jack and the Beanstalk*' have been on sale since 1st December. Please telephone Mrs M Gladwin (636558) to make your booking. Please make your call before 9pm.

Published by Bugle Publications. **Editor** Emma Youatt, Square House, Middleton by Youlgrave, Bakewell, Derbyshire. DE45 1LS. Phone **01629 636775** (please phone first before faxing), e-mail e.youatt@virgin.net

Contributions to arrive by the 14th each month to Square House or to The Post Office

The views in this publication are not necessarily those of the editorial team.

Printed by **Reprint** Bradford Road, Youlgrave 636410 as a community service free of charge.



The Bugle is Sponsored by Youlgrave Post Office

VALPO VIEW

1999 has been one of those years. You know, blink and it's gone! Each day was so filled

with necessities that fun and even gardening were put on the back-burner of life.

So Valpo gardens have not developed much. The carpets have stayed down to carry on killing the weeds, the vegetables have fed more slugs and caterpillars than humans, and the whole hill has maintained an air of exuberant neglect. 'Ah, well,' I say to myself, 'next year . . .'

That's the wonder and frustration of gardens. If the jobs don't get done on time it's too late, but there's always next year. Nature's cycle of regeneration is reliable, although the weather may not be. Whatever happens, in all likelihood there will be another winter, spring, summer and fall.

Next year will be 2000. To countless humans the passage of time will have heralded a whole new era: computer bugs will have happened - or not; the 'Dome' will have opened its gates to the public and be a wild success - or not; the party poppers will have popped and the hangovers will have hung. To the garden it is all the same. Plants will grow next year as they did this - or not; birds will sing and cats will hunt them; and hedgehogs will

shuffle their way through the night.

There is still something bigger, something more intricate, something more reliable than the human being. To the keen observer it is all very natural and very reassuring.
Jeniwren 11.99



Youlgrave and District Poppy Appeal

Karen Wigley would like to thank everyone who donated to the collection boxes, which raised £844.36. This means, with all other donations raised at coffee evenings, raffles etc., Youlgrave and District has raised over £1400 for the Poppy Appeal.

A big 'thank you' to all the ladies who collected door-to-door and the businesses in Youlgrave and to Youlgrave School for their support.

Karen would also like to thank Mr Bob Skinner for all the help and guidance he has given her in this her first year as co-ordinator.

Dear Bugle

During the last week of October, a number of gravestones were pushed over by persons unknown, my mother's was one of these. Fortunately none were damaged, except loosened on the stand, which will result in having them made secure again. I would like to thank Doug Oldfield (and probably others) for standing these upright again.

Do the culprits realise the upset caused to the families concerned? It is not only these, but others who have loved ones buried in the Churchyard who are concerned. Perhaps these persons have no one buried there yet and have not thought how they would feel if their families experienced this upset. We feel angry and very annoyed that anyone could do such a thing. I hope they have the decency to come forward and own up after perhaps reading this or being told by someone who reads it and mentions it in passing.

W. M. Riley.

YOULGRAVE NEIGHBOURHOOD WATCH

MILLENNIUM CRIME PREVENTION

To help you and those around you enjoy the festive season to the full, the police have issued the following guidelines:

- Make sure your house is secure if you are going out or away over the holiday period. Your Community Development Officer Dave Mote (812504) can advise on security.
- Arrange for someone to keep an eye on your property. Give them a key, especially if you have an alarm, and let the police know who the key holder is.
- If you are having a party, invite someone who would otherwise be alone. Be aware of potential parking problems and do not block others' access.
- Remember fireworks are dangerous - attend professionally organised displays.
- Make a list of useful telephone numbers for any emergencies that might arise.

Please look out for:

MILLENNIUM MUGS

Parents who registered their children for a Millennium mug from Youlgrave Parish Council can collect them on the morning of Saturday 8th January 2000 from 10.30am onwards in the Village Hall. Refreshments will be served.

- Bogus callers.
- Suspicious people near unoccupied houses.
- Excessive rowdiness - particularly alcohol-related as this can lead to serious incidents.
- Lonely vulnerable people who could become a target for crime or nuisance.
- Your neighbours who are out or away.

The emergency services will be very stretched during the holiday period and may take longer to respond to calls. In these circumstances, people may need help from their neighbours.

We Where there . . .

In 'District Council Matters' John Youatt refers to gridlock in Youlgrave on the evening of 13th November but he was merely the driver. Jean and I were dressed up to sing at a Bakewell Choral Society concert and so we sat in his car in our finery. And sat.

Eventually we could bear it no longer and enrolled as temporary traffic wardens. With cars attempting to park on both sides of the road and both routes to Moor Lane blocked with traffic, the real cork in the bottle was a bus heading towards the centre of the village.

The bus driver had turned on his hazard warning lights and was waiting for the police to turn up (his words). We got some car drivers to go up on the pavement and at the church asked people to turn round, back up or go to Youlgrave via Gratton.

We got the bus moving forward and the following traffic spewed out in all directions.

What was that about a Youlgrave bypass earlier in the year? MDPC

Roger and Jennifer wish you all a Happy and Prosperous New Year

Local Company's Limited Edition

The Millennium Goblet

Every piece in Asquith's range of Sterling Silver displays an exclusive character evolved over the many years that the Asquith family has spent in the art of designing and working in silver. In its studios in Youlgrave a team of highly skilled craftsmen produce a superlative range of related pieces; hand made in heavy gauges of silver and finished to exacting standards.



In celebration of the Millennium Asquith Silver is offering its customers the

opportunity to own this unique item prior to general release.

The Edition, hand crafted in sterling silver and marked with the Millennium hallmark, will be limited to 200 goblets worldwide, each bearing a unique number and certificate of authenticity. They will be priced at £350.00 each or £650.00 per pair. Quantities of over 10, however, will attract a discount. Engraving can be added to create a personalised gift.



The Hallmark is your guarantee of the quality of the precious metal. Hallmarking in Britain has a long history and is probably the oldest form of consumer protection in the country. The Millennium Hallmark is a special additional mark applied to precious metals by the UK Assay Offices only during 1999 and 2000.

For more information or to view a sample please call us on 636204.

ASQUITH
DESIGN PARTNERSHIP

The Millennium comes to Middleton

At a recent meeting of the Village Hall and Entertainments Committee, ideas to celebrate the Millennium in Middleton were discussed. In keeping with the Sites of Meaning Stones, a proposal was put forward for a Village Walk. This would take place as near as possible to the Longest Day 2000. It was originally thought that a 'Beating of the Bounds' might be a good idea i.e. - walking the Parish Boundaries and visiting the Sites of Meaning on the way, followed by a picnic and get together, plus, possibly, a photo of the Village members. However, logistically this is probably impossible due to distance and lack of public footpaths etc. It was suggested, therefore, that a number of group walks of differing lengths be arranged to suit all ages etc. with some at least of the Sites of Meaning being visited en route followed by a picnic, possibly in the Village Hall.

What are your thoughts on these proposals? Let's get the Village together and celebrate the Millennium in quite an old fashioned way. Please let me know if you think this is a good idea, have any other suggestions or different ideas?

Call Carole Brister (636815).

Recycling Points



Rather than being stuck for what to do with your Christmas tree after twelfth night, take it along to Coldwell End Car Park, where DDDC will take it away for recycling. The service will be available throughout January 2000.

There will also be several points for Christmas card recycling, including: Station Car Park, Matlock; Sainsburys Car Park, Ashbourne; and Granby Road Car Park, Bakewell. These will be open from 5th January to 31st December

Remember, the more 'waste' we recycle, the less we have to accommodate in landfill and we save precious resources.

Dear Bugle Readers

Albin and I (Dawn), have recently moved into Daisy Bank Cottage, Stoney Side, Bradford Dale, Youlgrave. We would very much like to hear from anyone with information/photographs of our cottage, as we are looking to restore it to its former glory.

We would return photographs etc should anyone be kind enough to let us borrow them.

We understand that Daisy Bank was at one time know as Bridge View, presumably prior to the four houses that are now in front of it.

Dawn v Banister.

1ST YOULGRAVE SCOUT GROUP BONFIRE NIGHT

The Scouts would like to thank everyone who turned up on such a miserably wet night. The event was a huge success and we even made a small profit for Scout funds. We hope you enjoyed the display and BBQ as much as we did. Keeping the fireworks dry enough to light was rather tricky but with plenty of plastic bags and silver foil our intrepid pyrotechnicians managed to detonate them all. Thanks to all the helpers.

See you next November 5th.

BOYS AGED EIGHT PLUS

Scouts and cubs meet on Monday nights at the Scout Hut next to the School. The leaders are enthusiastic and provide a wide range of activities. They are always keen to welcome new members. If you are interested, come along and have some fun.

Cubs (8 - 10½) 6.30 to 8.00pm.

Scouts (10½+) 8.00 to 9.30pm.

Dianne Hewitt (treasurer).

Dear Bugle

With reference to the article about kingfishers in last month's Bugle, the shortage of kingfishers is due, among other things, to excessive disturbance and visitor pressure, especially dogs running loose. If you do know where the kingfishers nest please keep it to yourself if you want to see them again another year.

GWW

Last Posting Dates:

2nd Class - 18 December

1st Class - 21 December

Forthcoming Events

- 25th January to 5th February** Youlgrave Pantomime, 'Jack and the Beanstalk'. Tickets from Mrs M Gladwin (telephone 636558), before 9pm.
- Friday 17th December** Bowls Club Christmas Concert with Youlgrave Silver Band. Youlgrave Village Hall, 7.30pm. Details from Peter Rowland, telephone 636467.
- Monday 20th December** Carol singing at the Croft. Holywell Lane, 7.00 - 8.00pm.
- Saturday 26th February 2000** 'Sixties' evening. Youlgrave Village Hall, 7.30pm. Live music, Dancing and bar. Tickets £3.00.
- Wednesdays** Diane Kettle's Life drawing classes. Middleton Village Hall, 7.30pm.
- Thursdays** Peak Rural Welfare Rights Project 'Benefits Advice'. The Doctors' Surgery, 10 - 11.30am.
- Fridays** Yoga with Iris Pimm at Greenfields Farm Barn (tel. 636341), 9.30am.
- Fridays** Yoga for over 50's. The Scout and Community Hall, 3.30pm.
- Please let us have more details of events for the next edition**
The Publishers accept no liability for the accuracy of the information given.

DISTRICT COUNCIL MATTERS

Roads are dedicated in the Highways Acts for the passing and re-passing of traffic. Not for parking!

Was the gridlock in Youlgrave on Saturday 13th November the first or worst? It might not be the last. It only takes parked cars, a bus and a car towing a caravan or trailer to block the main street. It only takes one thoughtless person – perhaps a visitor not realising – to park outside one of our shops or pubs to discourage a customer, who then drives on by to Bakewell or Matlock. We should not wait for an emergency or accident.

Youlgrave Parish Council has agreed that our highest priority is to look (yet again) at traffic management in the village. It could be the right moment, because all three local authorities seem to have traffic in villages on their agendas – and even, I hope, in their budgets next year.

The first meeting of a task group will list all the tools available, and see which might be practicable and affordable.

Bugle Sponsorship

Yes, I would like to sponsor for 'The Bugle' for 2000. I enclose £10. I would/would not like to be listed in every edition. Please note that sponsors' details will not appear after the February edition for those that have not re-subscribed.

Name: _____ (please print clearly)

Details: _____
(up to 50 characters total)

Telephone number: _____

Please make cheques payable to 'The Bugle' and send all payments and details to Ann Knowles, Garden House, Fountain Square.

For further details, including edition sponsorship, telephone Ann (636362) or Emma (636775).



From the Cookhouse Door



Chick-a-Leekie Soup

Ingredients

- 1 medium onion - diced
- 1 leek - sliced thinly
- 2 carrots - diced
- 1 potato - diced small
- 1 chicken fillet - skinless, sliced very thinly
- 1 stock cube



Method

In a large, thick-bottomed saucepan melt 1½ oz butter, add the vegetables and simmer until soft - then remove to a bowl. Put the chicken in a pan and stir over a low heat until cooked through - then add the vegetables, stock cube and water. Bring to the boil and simmer for 1½ hours. Season to taste and if liked, add a little sherry. Serve with crusty bread.

Merry Christmas

ANNUAL SPONSORS

Dave Axon, DKFL Books and Software	- - - - -	650628	The Post Office	- - - - -	636201
Beechwood Estates, Residential and Lettings	- - - - -	580670/814092	Pots from France	- - - - -	636043/636689
Bradford Dale Retreat	- - - - -	636550	QC Curtain Company	- - - - -	636161
Viv Butler, Meadow Cottage Tea Garden.	- - - - -	636523	SR & JK Roper, Builder & Joiner	- - - - -	636498
Ray Carter, Joiner	- - - - -	636269	Barbara Scrivener, Reflexology and Massage	- - - - -	636601
Castle Farm, B&B, Caravans & Camping Barn	- - - - -	636746	M&D Shimwell, Haulage, Sand, Cement & Blocks	- - - - -	636305
The Druid Inn, Birchover	- - - - -	650302	Greg Wilkinson, GK Electrical Services	- - - - -	636799
Equity Estates, Commercial Properties	- - - - -	636815	John Youatt, Planning Consultant	- - - - -	636241
The Farmyard Inn	- - - - -	636221	Youlgrave Bowls Club	- - - - -	636467
Eric Goodwin, Plasterer & Tiler	- - - - -	636627	Youlgrave Cricket Club	- - - - -	636656/636571
Hollands Butchers	- - - - -	636234	Youlgrave Garage	- - - - -	636943
The Knoll Club, Youlgrave Royal British Legion	- - - - -	-	Youlgrave Neighbourhood Watch	- - - - -	636611
Peter Knowles, Architect	- - - - -	636362	Youlgrave Parish Council	- - - - -	-
Andrew McCloy, Benchmark Books	- - - - -	636125	Youlgrave Silver Band	- - - - -	-
A Murray, The Wee Dram, Bakewell	- - - - -	812235	Youlgrave WI	- - - - -	-
Doug Oldfield, Handyman & Sweep	- - - - -	636797			
Eleanor Pilkington, Peak PR	- - - - -	636871			
Iris Pimm, Greenfields Farm Barn	- - - - -	636341			

Annual 'Bugle' sponsorship is only £10. Please contact Ann Knowles (636362) or Emma Youatt (636775) for details.

The Bugle is Sponsored by Youlgrave Post Office