



The Bugle



A chance to blow your trumpet for the villagers of Alport, Middleton and Youlgrave

No.15

May 1999

TIME TO CHOOSE



I think we can safely say that the tourist season has well and truly started, bringing much longed for custom for many local businesses. 'The Bugle' wishes all traders a prosperous season.

Don't forget we've got District Council elections on 6th May so don't waste those votes – it doesn't take long! Your vote can be cast at Youlgrave or Middleton Village Hall from 8am to 9pm.

There would be Parish elections too

but both Middleton and Youlgrave are in the situation where councillors need to be co-opted . . . a democratic deficit?

Down on the farm our agricultural correspondent reports that her herd of dairy cows can smell the new grass. They are very anxious to start grazing. Sadly, the weather is still too cold and too wet for their wellbeing (the cows that is). No such shelter for the poor little lambs though.

On 19th April a meeting was held for the year 2000 pantomime. Five people have volunteered to help backstage. Anyone wanting to be involved should contact Margaret Gladwin (636558) or any Village Hall Committee member.

Football – Youlgrave Under 14's Going from Strength to Strength

The Under 14's continue their impressive run in the Derwent Valley League. The match on 14th April, sponsored by Duncan Brocklehurst, saw a top of the table clash with Baslow. At half time the score was 1-1. In the second half the lads came out to give an all-round magnificent performance, taking the final score to 5-2. It was nice to see all the local support on the night. Look out for May fixtures which are dependant on our performance in the Palmer Trophy .

MIDDLETON
by
YOULGRAVE
Well Dressing Week
and

Village Market

Saturday 29th May 1.30pm



Teas Served from Saturday to Monday for the Village Hall and Tuesday and Wednesday for Church Funds

Millennium Fever . . . Now Under Control



It is with great pleasure I report that our Millennium Fever Patient is well and making good progress. At the meeting on 14th April the final 'yes' was given to a whole series of ideas to promote the Youlgrave Area and keep us on the map .

A history of Middleton is being compiled by Eileen and Henry Brocklehurst and a photographic/video project by Alan Burgess is underway. 'Sites of Meaning', an idea to mark the 17 entrances to Middleton Parish, and a

tree planting project are helping to keep Middletonians bubbling with enthusiasm.

A late idea, to develop the Youlgrave Reading Room into a homework, adult education, computing and information resource was warmly received and added to the Youlgrave plan. While the full cost of renovations and improvements may not be met by Leader II grants, it is hoped it will be able to make a substantial contribution. The Parish Council may also be able to help with running costs.

The British Legion have offered to provide food and fun for the children one day in the summer and the WI will be looking at the possibility of reissuing their history of the village booklet.

Altogether a very positive meeting – many thanks to all those who attended. **WATCH THIS SPACE!!!**

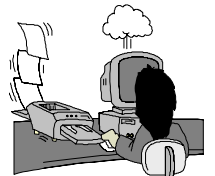
Published by Bugle Publications. Editor Emma Youatt, Square House, Middleton by Youlgrave, Bakewell,

Derbyshire. DE45 1LS. Phone & Fax 01629 636241/636775, e-mail EYouatt@AOL.com

Printed by **Reprint** Bradford Road, Youlgrave 636410 as a community service free of charge.

Contributions to arrive by the 14th each month to Square House or to The Post Office

The views in this publication are not necessarily those of the editorial team.



QC The Quality Curtain Company Tel 636161

OPENING DOORS IN YOULGRAVE

Derbyshire County Council Community Education is running a series of Adult Education 'taster' sessions in your area as part of the 'Opening Doors' project. These aim to encourage people to try out new activities and develop their skills, particularly if they have not formerly taken up learning opportunities. Courses have recently taken place in Tideswell and other

Peak District villages as a follow on from similar 'taster events'.

There are three sessions where you can come along and sample what's on offer. These will all be at the Community Hut (next to the village school) in Youlgrave on Thursday 20th May, 9.30am-3.30pm, Tuesday 25th May, 7-9pm, Friday 28th May, 9.30am-12pm. This coincides with 'National Adult Learners' Week when similar events will be happening around the country.

During these sessions you will be able to try a range of educational opportunities for adults such as Aerobics, 'Beginners' French, Introduction to Computers, Arts and Crafts, Fishing, Everyday English and Maths topics, Careers Guidance for adults and Home Maintenance.

Taster sessions are FREE and help may be given with transport and child care. A daytime crèche is available and refreshments may be obtained.

Please look out for local publicity for details of times of particular sessions and a questionnaire to find out what your interests are. You can also contact the number below for further information. We look forward to seeing you and hearing your views about what you would like to see put on.

Derbyshire County Council Community Education Lifelong Learning, 'Opening Doors Project'. Pat Fairbrother, Fieldworker, Hope Valley College, Castleton Road, Hope, Hope Valley S33 6SD. tel. 01433 620662.

Rural Remedies . . .

Comfrey - used to be grown in cottage gardens for its medicinal properties. Leaves spread on arthritis were used to soothe pain and take away inflammation. Perhaps 'Bugle' readers would let us know if it is efficacious.

Common Lady's Mantle - medieval alchemists collected the dew from the leaves at dawn and used it in their experiments to manufacture gold. More chance with the Lottery - or perhaps not? Traditionally, it was used to restore sagging bosoms to their former shape and size, Hmm!

Common Valerium - known as 'God's hand leaf' or 'cut leaf' in some parts of the country. Leaves were wrapped round such things as a sore on a finger and kept in place overnight.

Creeping Cinquefoil - a concoction made from the roots was given to Manx cats with diarrhoea. Perhaps we could save a few vets' bills by trying on our Derbyshire moggies.

Tormentil and Ragwort - were both used as a cure or a preventative for paralysis or strokes. On the island of Guernsey Milkwort is still known of as 'herbe de paralasie'.

Keep healthy!



Granby House

Friends of Abbeyfield wish to announce that the coffee morning and 'Bring and Buy sale' held at Granby House, Youlgrave on Saturday 10th April was a great success. £160.28 was raised for the Youlgrave Village Hall Fund. Many thanks to all involved.

EP

Wesleyan Reform Sunday School 'Bits & Bobs' Sale

Thank you to everyone who helped and supported us at our sale. £177 was raised to provide equipment in Sunday School. Following the crisis in Kosovo, the children and teachers decided to donate £50 of this money to help children so much less fortunate than themselves.

LOCAL BY-ELECTION

The local district by-election takes place on Thursday 6th May, with three candidates standing for the ward of Youlgrave, which covers Alport, Harthill, Middleton, Over Haddon, and Youlgrave. Here is a brief background on each of the candidates:

Maureen Joyce Smith (Lib. Dem.)

A teacher of English at Lady Manners School, Bakewell, for 29 years, Maureen Smith is a familiar face to many in the area. Having lived in Over Haddon for the past 35 years Maureen now considers herself to be 'almost native'. In 1994 Maureen took early retirement, and is now an active member of the Liberal

Democratic Party and was formerly Clerk to the Parish Council for two years.

Contact Details: Maureen Joyce Smith, The Bungalow, Wellgate Lane, Over Haddon, Bakewell, Derbyshire. DE45 1JE
Tel: 01629 812097.

Richard John Soper (Cons.)

Formerly from New Zealand, Richard Soper moved to England in 1986 to study for his Masters in Economics at Warwick University and has stayed here ever since. Currently employed as Principal Assistant in Investment Management at Derbyshire County Council, Richard previously worked for WH Smiths' Pension Trust and is an active member of the local Conservative Party and a keen orienteer.

Contact Details: Mr Richard John Soper, 1 The Old Meeting House, Fountain Square, Youlgrave, Bakewell, Derbyshire. DE45 1UR.
Tel: 01629 636459.

John Robin Youatt (Independent)

With over 27 years' experience as a planning officer for the Peak National Park Authority, John Youatt has been actively involved in numerous policy & rural development programmes for the Peak Park, including local needs housing, jobs in the countryside, European programmes and over six years planning the Bakewell Project. Choosing to take early retirement, John now divides his time between his Planning Consultancy work and his part-time job with a national charity.

Contact Details: John Robin Youatt, Square House, Middleton by Youlgrave, Bakewell, Derbyshire. DE45 1LS.
Tel: 01629 636241.

The Polling Stations will be located at the Village Halls of Youlgrave, Middleton and Over Haddon and will be open from 8am to 9pm on Thursday 6th May.

QC Curtaining & Blinds Specialists Tel 636161

Middleton Welldressing

In 1977, the year of the Queen's Silver Jubilee, we were all looking for special events with which to celebrate the occasion – a little bit like the present situation with the Millennium. Villagers from Middleton came up with a wonderful idea to reinstate the village Welldressing. Susan Harby, Mary Marsh, Ena Prime, Alice Twyford and Jean Youatt, set to work arranging to bring to life the Welldressing designed by Susan.

This first Welldressing depicted the Queen in front of Middleton Hall incorporating a facsimile of her signature. The event was repeated the following year, and has been ever since. Middleton Welldressing is now the main event in the village calendar attracting customers for the Village Market. Teas are sold in the Village Hall throughout the holiday weekend.

Over the years the design has been mainly of a non-religious nature. Many local and national charities have featured and, of course, benefited from the collection. The inspiration last year was 'International Year of the Ocean' with the design by villager Charles Monkhouse and the proceeds going to the RNLI. Local charities that have benefited in the past include Derbyshire Lifebike Appeal,

Youlgrave Church Bells, Middleton Church Roof, Granby House and the Scout Hut.

The Village Market and start of Welldressing Week this year is Saturday 23rd May.



A Parish Day at the County Records Office

In the March 'Link' we read about a Parish Day at the County Records Office in Matlock and we booked in for the morning two hour session.

On arrival we were ushered into a strong-room, completely devoid of windows, where the rest of the party was gathered, forming a group of 10.

An archivist introduced us to the vast collection of public archives held in the vaults, and which form part of the nation-wide network of county records. Placed end to end, these documents would cover over three miles - and all of them accessible to the public. At the entrance hall we had observed some of the

public in the 'search room' beavering away, copying recorded gems they had discovered.

We were shown examples of the archives, and being 'Parish Day', these were from the Diocesan Records. On tables around the room were exhibited Vestry and Sunday School Minutes, Church Wardens Accounts, a Parish Register, a pew rent ledger, a flower bazaar programme and title maps. There was also an architect's plan and perspective of a proposed grand new church at Edale, including a contrasting sketch of the plain existing building, all neatly drawn in pen and ink.

The second part of our visit consisted of climbing up a labyrinth of stairs to the top of the building, where archives are repaired. Here we were met by the Conservator, who led us into her workshop, a room with a view across to the hillside and Riber Castle. An enormous table covered in documents and maps dominated this large room, and around it there was an array of

equipment, including a light table, a fume cupboard and a large sink – all needed for undertaking the delicate work of repairing damaged archives. Here they are able to mend tatty old papers that are falling to bits and put them together again.

A good knowledge about paper is essential to this process. Woodpulp used today is very acidic, becomes brittle and quickly disintegrates. Previously paper was made from rags and is more stable. Earlier again we have parchment made from sheep skins. So many things used today can damage paper, for example: Sellotape, paper clips, rubber bands, plastic bags and cellophane.

The Conservator quite overwhelmed us with the problems she has to deal with.

We then returned to the ground floor level, and after a cup of coffee, left with our newly acquired knowledge.

JRM

Allotments

Youlgrave Parish Council has Allotments to let.

One half allotment at £2.50 p.a.

Two adjoining allotments which have been used for chickens for 20 years.

The double plot requires extensive work before the land will be suitable for cultivation and costs £5 p.a. for each.

Contact Ingrid Newman for further details (636084).

Wit, Wine and Words

With Lesley Glaister and Berlie Doherty
Monday 17th May at Hope Valley College,
7.30 for 7.45pm.

You are invited to join us for a relaxed and informal evening to celebrate the delights of reading. Two nationally celebrated local authors, Lesley Glaister and Berlie Doherty, will be talking about their work and signing copies of their books. Wine, soft drinks and nibbles will be served. Tickets are £2 for adults, which includes two glasses of wine, and children are admitted free.



GRANBY HOUSE

**ABBAYFIELD (Youlgrave & District)
SOCIETY LTD**

There is a vacancy for ONE RESIDENT at Granby House.

Granby House is comfortable and friendly and offers rooms with private facilities and the resident's own furniture. A housekeeper provides two meals a day.

Residents live as independently as they wish, with their own front door keys, but they have companionship, security and peace of mind. As Abbeyfield is a non-profit making organisation charges are very reasonable.

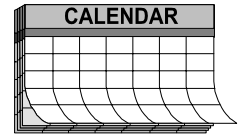
Anyone who is of pensionable age and reasonably fit and active may apply to become a resident.

If you are interested, please contact our housekeeper on 636061, or write to The Chairman, Granby House, Alport Lane, Youlgrave, Derbyshire DE45 1WN.

Abbeyfield, where older people find care in housing.

Supplier of all leading fabrics, curtain tracks & poles

Forthcoming Events



- Friday 7th May 'Sites of Meaning' Launch Event. Middleton Village Hall, 7.30pm.
- Monday 17th May Youlgrave Water Works Ltd AGM. Youlgrave Village Hall, 7.30pm.
- Monday 17th May 'Wit, Wine and Words' Evening. Hope Valley College, 7.30 for 7.45pm.
- Thursday 20th May 'Opening Doors' Adult Education Taster Session. The Scout and Community Hut, 9.30am – 3.30pm.
- Saturday 23rd May Middleton Well Dressing and Village Market. Middleton Village Square, 1.30pm.
- Tuesday 25th May 'Opening Doors' Adult Education Taster Session. The Scout and Community Hut, 7 – 9pm.
- Friday 28th May 'Opening Doors' Adult Education Taster Session. The Scout and Community Hut, 9.30am – 12pm.
- Thursday 3rd June Afternoon Teas in aid of Save the Children. The Garden, Church Barn, Middleton, 2 – 5pm.
- Saturday 29th May Middleton Well Dressing and Village Market. 1.30pm.
- Wednesdays Life drawing classes with Diane Kettle. Middleton Village Hall, 7.30pm.
- Thursdays Peak Rural Welfare Rights Project 'Benefits Advice'. The Doctors' Surgery, 10 - 11.30am.
- Fridays Yoga with Iris Pimm at Greenfields Farm Barn (tel 636341), 9.30 - 11.00am.

Please let us have more details of events for the next edition

The Publishers accept no liability for the accuracy of the information given.

NEIGHBOURHOOD WATCH

Attention all gardeners!!

There is an outbreak in the theft of garden ornaments and furniture throughout the area including Youlgrave. In some instances security devices have been cut. Please be vigilant and report anything suspicious, vehicles or people, to the police immediately.

From the Cookhouse Door

Pork Casserole with 'May Blob' Dumplings (Serves Four)

For the casserole 1 ½ lb. lean stewing pork, cubed
 2 carrots
 1 medium onion
 1 stalk celery
 2 tbs. chicken gravy granules
 Salt and pepper

For the dumplings 4 oz SR flour
 2 oz suet
 1 small tin crushed pineapple
 1 tsp. sugar, salt + mixed herbs (freshly picked or dried)

Method Place pork and chopped vegetables in casserole, sprinkle with gravy granules and pour on sufficient boiling water to cover (approx. 1 ½ - 2 pts.). Season to taste and put in oven gas mark 7 until bubbling, then down to mark 3 and cook 'til meat is tender.

Combine all dumpling ingredients, using the pineapple to bind them. Divide the mixture into eight and place in the casserole and cook until done (approx. 25 mins.)

SITES OF MEANING

If you live in Middleton and Smerrill, don't forget to look out for your invitation to the launch event for the Millennium Project 'Sites of meaning'. We'll be serving refreshments, telling you what we've done so far and playing games, so don't miss out. Middleton Village Hall, Friday 7th May, 7.30pm.

✂

MILLENNIUM MUG PRESENTATIONS

Youlgrave Parish Council is presenting each of the children in Youlgrave and Alport with a mug to celebrate the Millennium. Please fill in this form to register any children who will be aged 0 – 16yrs at the end of December 1999.

Name of Child(ren)

Age(s)

Address

Telephone

Please send completed forms to Ingrid Newman, Overdale, Coldwell End, Youlgrave by the end of May.

✂

<p>Dave Axon, DKFL Books and Software - - - - - 650628</p> <p>Bradford Dale Retreat - - - - - 636550</p> <p>Viv Butler, Meadow Cottage Tea Garden. - - - - - 636523</p> <p>Ray Carter, Joiner - - - - - 636269</p> <p>Castle Farm, B&B, Caravans & Camping Barn - - - - - 636746</p> <p>The Druid Inn, Birchover - - - - - 650302</p> <p>Equity Estates, Commercial Properties - - - - - 636815</p> <p>The Farmyard Inn - - - - - 636221</p> <p>Eric Goodwin, Plasterer & Tiler - - - - - 636627</p> <p>Hollands Butchers - - - - - 636234</p> <p>The Knoll Club, Youlgrave Royal British Legion - - - - -</p> <p>Peter Knowles, Architect - - - - - 636362</p> <p>QC Curtain Company- - - - - 636161</p> <p>Andrew McCloy, Benchmark Books - - - - - 636125</p> <p>A Murray, The Wee Dram, Bakewell - - - - - 812235</p> <p>Eleanor Pilkington, Peak PR - - - - - 636871</p> <p>Iris Pimm, Greenfields Farm Barn - - - - - 636341</p> <p>The Post Office - - - - - 636201</p> <p>Pots from France - - - - - 636043/636689</p> <p>SR & JK Roper, Builder & Joiner - - - - - 636498</p> <p>Barbara Scrivener, Reflexology and Massage - - - - - 636601</p> <p>M&D Shimwell, Haulage, Sand, Cement & Blocks - - - - - 636305</p> <p>Greg Wilkinson, GK Electrical Services - - - - - 636799</p> <p>John Youatt, Planning Consultant - - - - - 636241</p> <p>Youlgrave Parish Council - - - - - -</p> <p>Youlgrave Silver Band - - - - - 636362</p> <p>Youlgrave WI - - - - - -</p>	S P O N S O R S
--	--------------------------------------

Annual 'Bugle' sponsorship is only £10. Please contact Ann Knowles (636362) or Emma Youatt (636775) for further details.

For Quality, Choice and Value for Money Call QC Tel 636161