



Bugle

A chance to blow your trumpet for the villagers of Alport, Middleton and Youlgrave

No. 12

February 1999

HAPPY 1999

Well readers, happy New Year and welcome to our 12th 'Bugle' after a year of publishing.

As it is our year-end, we asked Roger Easton, of the Post Office, to audit our accounts. He found them to be in good order and running at a modest profit. As we carry the

expense of having the Bugle delivered to your door, these reserves are vital. We are very happy that some of our annual sponsors have supported us for a second year and would like to thank them. We will update the listing on the back page next month and have therefore printed the sponsorship form again on the back page.

We would also like to thank our writers for their contributions last year, and would like ask our readers to help out too. We are here to put forward your views so come on, get 'blowing your trumpets!' Remember, smaller items are very welcome and don't worry about the grammar and

spelling being perfect, we're happy to deal with the technicalities – it's your artistic talent we're after!

It's Pantomime time again, a welcome tonic to counteract the January blues. This year's show, 'Aladdin', rings the changes again, being not only produced but also written by Louise Page and Christopher Hawes, our resident 'Archers' scriptwriting team members.

The nights are getting lighter and the first green tips of the spring flowers are peeping through. With them they bring the promise of a bright New Year for us all.

GRANBY HOUSE

Youlgrave's only Older Persons' Home.

The local Abbeyfield Society runs Granby House in Youlgrave, providing supported living in private rooms for eight people – their home from home.

The committee is pleased to welcome readers of 'The Bugle' to our AGM on Saturday 6th February (see details in Forthcoming Events).

For those readers who don't know: -

- Abbeyfield is a national society supporting 900 locally-run homes for the lone elderly.

- Granby House was once a doctor's house and surgery, then a knitting factory.
- It was bought, extended and converted to its present use in 1990, at a cost of £250K.
- Prince Charles, Princess Diana and Lady Caroline Waterhouse opened the house on 9th March 1990.
- There are rooms for eight residents, most of whom have a local connection.
- There is a housekeeper's flat and a relief housekeeper's room.
- Residents can dine in company in the dining room and relax in the conservatory.
- There are six employees, led by the housekeeper, Kate Caswell.

1998 was a fairly typical year, looking always for the right balance between a normal homely atmosphere and one supported too much by health care professionals.

1999 should see another step forward. We are looking into the possibility of a further physical extension at a cost of around £250,000, which would provide better homes and allow more scope for providing support care.

We were very pleased to join Mrs Lil Reece's celebration of her 100th birthday last year at Granby House. This year the AGM is on the day of her birthday, the 6th February. We wish her a very happy birthday.

So, please come along – we are always open to suggestions, would welcome your support and are keen to attract new members onto the Executive Committee.

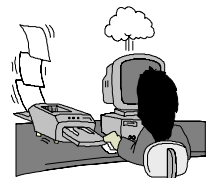
Abbeyfield – where older people find

Published by Bugle Publications. **Editor** Emma Youatt, Square House, Middleton by Youlgrave, Bakewell, Derbyshire. DE45 1LS. Phone & Fax **01629 636241/636775**, e-mail EYouatt@AOL.com

Printed by **Reprint** Bradford Road, Youlgrave 636410 as a community service free of charge.

Contributions to arrive by the 14th each month to Square House or to The Post Office

The views in this publication are not necessarily those of the editorial team.



Hollands Butchers February Special Offers Inside Tel 636234

MIDDLETON AND SMERRILL PARISH COUNCIL Millennium Projects

Sights of Meaning

One of the Middleton Millennium Projects is to put marker stones with inscriptions, chosen by parishioners on all the entrances to the parish. The inscriptions might be snippets of a favourite poem, a biblical reference or perhaps a favourite saying or phrase. The marker stones and inscriptions will be chosen, marked and placed over the years immediately either side of the millennium.

Presently the team are looking at funding and possible locations, but will soon be looking at the quotes and this means you! We want you to pull your

thinking hats on and put your brains into gear: we want to know what the people of Middleton and Smerrill think and what thoughts you want to be passed down for future generations.

For further information please contact the group leader, Charles Monkhouse.

Video of Photographs circa 1900

The Parish Council has also given its approval to a project to complete a slide-show presentation of old photographs of Middleton taken around the year 1900. In addition, a VHS video will be made of this presentation.

The project will only be successful if sufficient material is available in the form of old photographs accompanied by background information such as dates, names of people, places and animals etc. The organising committee (named below) seeks your support by looking through family records and memories for any material that you think is interesting and suitable for temporary loan and use in the

presentation. If you are in any doubt about the suitability of material, please let the committee have the chance to decide, as it may be the "missing piece of the jigsaw!"

Your contributions and support for this project will be very much appreciated. Photographs and background information should be sent or given to: -

Alan Burgess (636659), Mrs Ena Prime (636527), Mrs Alice Twyford (636752) and Mrs Karen Wigley (636229).

Henry and Eileen Brocklehurst also hope to put together a book celebrating the history of the village. They already have a wealth of source material, but would welcome any new historical contributions you feel are relevant.

Following the Parish Council meeting, the tree planting committee will shortly be approaching various landowners and farmers in connection with finding a suitable site for the proposed tree planting.

Meditations for Lent

Why not give yourself an hour of space each week to build up your relationship with God, and to think through the meaning of Lent? The inter-denominational Julian Group in Youlgrave is running a series of meditations on Tuesday evenings through Lent entitled: "**God is, I am**".

The Julian group has been meeting once a month for several years and is part of a nation-wide network of meditation groups. The movement has grown out of the teachings of Mother Julian or Norwich, the thirteenth century Christian mystic whose writings have found many echoes in the way we live our faith today.

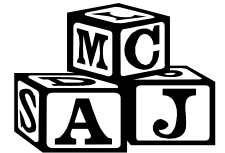
A typical meditation consists of a gentle process of relaxation for up to half an hour of quiet concentration on a given theme. It provides a simple and informal space for you to explore your own faith in greater depth. Sharing the results is entirely optional.

The meetings in Lent will last from 8 m to 9pm, with a warm drink, and biscuits for anyone who would like to stay on afterwards. They will be held alternately at Stanton House, Gordon and Hazel Coupe's home on Alport Lane (second house after the Reading Room) and Church Corner, Jill Robson's retreat (formerly Green Apple). Tuesdays at 8pm at Stanton House on 23rd February, 9th March, 23rd March, and at Church Corner on 2nd March and 16th March.

If you have any queries contact Jeni Edwards (636550) or Hazel Coupe (636411). The meetings are open to all who are interested and everyone is welcome.

Jeni Edwards

Youlgrave Parent and Toddler Group



Starting on the 10th of February in Youlgrave Village Hall.

The cost is £1.00, which includes tea, coffee and biscuits. Please bring a drink for your child.

The times are 9.30am till 11.30am and there are plenty of toys for children of all ages. Anybody needing further information, please contact Viv on 636861 or Emma on 636265.

Youlgrave Village Hall Presents

ALADDIN

A TRADITIONAL FAMILY PANTOMIME

Written and Produced by

Louise Page and Christopher Hawes

26th January – 6th February at 7.30pm

Matinee: Saturday 30th January

Bookings from:

Mrs T B Gladwin,
Coldwell End,
Youlgrave
Tel. 636558

Adults £3.00 Children £1.75

No booking calls after 9.00pm please



Pork Chops £1.10/lb; 5lb Braising Steak £1.88/lb; Danish Middle Bacon £1.58/lb

**YOULGRAVE C of E JUNIOR SCHOOL FOOTBALL TEAM
1969**



Winners of the Bunting Cup – South Peak Schools Knock-out

Back Row: Robin Stacey, Peter Elliott, Trevor Sellors, Barry Oldfield, Philip Wragg, Mark Swindell and Jeremy Hall

Front Row: Christopher Stone, Nicholas Bacon, David Bosley, Kevin Jackson and David Shimwell

**DESPERATELY
SEEKING
VOLUNTEERS!**

Youlgrave Meals on Wheels is in desperate need of volunteers who can spare approximately one and a half hours a month to help deliver meals in Alport and Youlgrave. Drivers and helpers are needed on Tuesday and Thursday mornings.

Drivers' expenses are paid. If you are able to help, please contact Bridget Ardley on 636611 as soon as possible.

Christmas Quiz Answers

1. Reindeer
2. Australia
3. Do they know it's Christmas? - Band Aid
4. Mistletoe
5. Santa's little helper
6. Gaspar
7. Mud
8. Tuesday
9. Plough Monday
10. St. Stephen - Dec 26th/Boxing Day.

How do you know when you're becoming a fossil?

*Everything hurts - what doesn't hurt doesn't work
The gleam in your eye is the sunlight hitting your bifocals
You go into a cave and know the fossil's first name
You feel like the morning after, but you haven't been anywhere
Your black book only contains names of doctors
You get worried just playing cards
You go into a maze but cannot remember if you went in to cut the flowers
or to find your way out
Your children begin to look aged
You join the health club but don't go
A dripping tap causes an uncontrollable urge
You know all the answers but no one asks the questions
You look forward to dull evenings
You need glasses to look for your glasses
You turn the light out for economy not romance
You sit in a rocking chair but cannot make it go
Your knee buckles but your belt won't
Your back goes out more than you do
You put your bra on back to front because it fits better
Your house is too big but the medicine cabinet is not big enough
You sink your teeth into a steak and they stay there
Your birthday cake collapses from the weight of the candles
You long to be young again but can't remember why*

This poem was sent in by Mr Piggot, of Chapel Close, as written by his 89-year-old Aunt (and still driving her car) so I think perhaps 'old age' is not quite as bad as all that!

Save The Children

To 'celebrate' my 50th Birthday I am going to attempt a sponsored walk from Land's End to John O'Groats commencing - all else permitting - on 10th April 1999.

I shall be walking roughly along the recognised Central Route. This is nearly all off road, using footpaths, tracks and open land wherever possible.

I shall remain on foot and on the trail the whole time staying in Bed and Breakfast, camping or even bivouacking out if all else fails.

I shall be financing the whole trip myself so that every penny piece pledged will go directly to Save the Children Fund and I invite you to be kind enough to sponsor me.

May I thank my sponsors for the £2,750 already pledged.

Simon Brister

If you would like to support him, please send sponsorship pledges to Simon at Lowfield Farm, Middleton, for details telephone him on 636815.

Dutch Shortback Bacon £1.75/lb; Pork Spare Rib Chops 98p/lb; English Ox Liver 45p/lb

