



# Bugle



**A chance to blow your trumpet for the villagers of Alport, Middleton and Youlgrave**

**No.9**

**October 1998**

## Are you ready for the countdown?

We've got nearly three whole months to go until Christmas and yet we are already receiving catalogues from various charities and companies. Even the shops are beginning to show signs of tinsel and holly.

At this time of year we all have the opportunity to help others less fortunate than ourselves. Whether for those close to home or from far away we can, by

choosing our gifts and cards carefully, boost the funds of organisations that rely on the sale of goods for the festive season.

As well as her Coffee Morning, on Saturday 3<sup>rd</sup> October, Elizabeth Lomas (tel. 636581) has copies of the Save the Children Christmas catalogue and can supply most cards from her stock and will take orders too. Also, Rosemary Key is donating half of the purchase price of each of her paintings sold during the weekend of 17<sup>th</sup> and 18<sup>th</sup> October to West Derbyshire Mental Health Support Group.

I am sure there will be many other events raising money for charities and the Bugle needs to know about them too. Please send in details to enable us to

advertise your efforts. This is your newsletter, and we're here to help. The winner of our identification competition was Ian Weatherley, who



### Did you guess the face?

wins the £5 prize. The 'Toothless Wonder' was no other than pub landlord, Tony Howarth! Remember, if you'd like to embarrass someone, send in a photograph!

## Explosive Excitement in Middleton

Val and David Edge, the new owners of 'Holly Cottage' and 'The Homestead' in Middleton, were the centre of excitement on Thursday 17<sup>th</sup> September.

Having begun work clearing the cellar of 'The Homestead', Val found a grenade. The device still had its pin in place, and so they acted quickly and called the police.

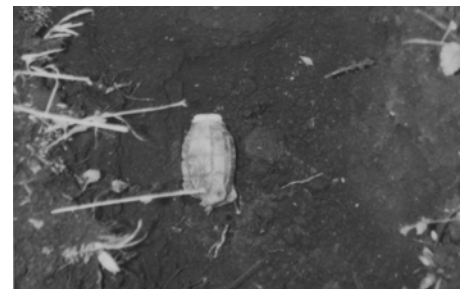


### The Royal Logistics Corps Bomb Disposal lorry in Middleton Square

The attending constable of Derbyshire Police called in the Royal Logistics Corps Bomb Disposal Squad. The grenade was typical of those used in WWII by the Home Guard. It was decided from its weight and condition that this one was live and possibly unstable. A hole was

therefore dug, the grenade buried under sufficient soil to lessen the blast and a controlled explosion carried out.

The police and bomb disposal officers confirmed that Mr and Mrs Edge had done the right thing in reporting their find so quickly.



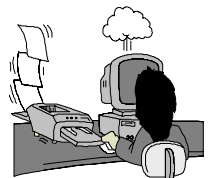
**The Hand grenade before detonation**

Published by Bugle Publications. **Editor** Emma Youatt, Square House, Middleton by Youlgrave, Bakewell, Derbyshire. DE45 1LS. telephone **01629 636241 or 636775** e-mail EYouatt@AOL.com

Printed by **Reprint** Bradford Road, Youlgrave 636410 as a community service free of charge.

**Contributions to arrive by the 17th each month to Square House or to The Post Office**

The views expressed in this publication are not necessarily those of the Editorial Team



## The Bugle is sponsored by F. Parker Butchers tel 636217

# A Ridge at Risk

Natural stone ridges are the backbone of our English hill countryside. English Law and livestock farmers are its guardians, and its peaceful beauty is enjoyed by millions of people, both locals and tourists alike, each year. Indeed, many make a living from it, one way or another.

One such ridge, is Robin Hood's Stride 'twixt Youlgrave, Alport, Harthill and Elton in the Peak National Park. But this quiet, rolling countryside, with dramatic gritstone features, which has been a familiar, and much-prized landmark for centuries, is now under real threat.

It is looked after in part by the Beaver family (tenant farmers) and the landowners, Stanton Farm Estates. For nearly 20 years, the Beaver family have tended the herds, flock, grassland and walls, and have won praise for their farm building design. Their good guardianship has enabled walkers, horse riders, cyclists and the wildlife to flourish in the area.

But this ridge is now facing a different future. The quiet lanes could soon rumble to the sound of up to 20 lorries each day on the steep and winding, single-track roads. Horses, cyclists, walkers and farm traffic could be at risk, and the tranquillity of the

countryside eroded.

The gritstone, which underpins the farm and Robin Hood's Stride, the standing stones and the Castle Ring, includes a small, totally enclosed gritstone quarry approved by the minister in 1952 with few restrictions. Blockstone Ltd. has traditionally taken the occasional large piece of stone from it, for craftsmen, masonry or ornamental uses, for many years.

Now Blockstone, owned by the Gregory family, want to increase extraction to supply the masonry stone market. "We will have to crush the 'ridge' to expose the sandstone block below," comments Mrs Gregory. "As much as we dislike ruining a beautiful piece of our countryside, we have no other option, unless an extension at New Pilhough can be granted." But there is nothing in the current permission to stop the installation of a noisy and dusty crushing plant.

Jonathan Moore of the Peak National Park Authority said: "We are negotiating with our hands tied by the nature of the old permission. An application to exchange the area of the planning permission went to the August meeting and a scheme was approved by Members of the Authority. A decision notice will be issued, limiting the amount of traffic and preventing the use of the quarry for crushed rock, as soon as the detail has been agreed." The Authority sees this as a chance to add control by a small-scale variation to an existing operation.

However, the company says that the Wattscliffe variation is intended to replace output from New Pilhough Quarry, Stanton, whose life has been limited by a recent planning refusal. Mrs Gregory explains: "Historically this has been a low output

quarry, but the future looks different, if we want to keep 80 people employed... and continue in business."

If the law were to allow this to happen, it could undo hundreds of years of careful guardianship. Mrs Beaver agrees: "I wake up in the quiet of the morning, and think, they must not let this happen." But what power has she?

Mrs Gregory concludes: "If you don't want your 'ridge' to be destroyed and there to be a terrible eye-sore near Robin Hood's Stride, then write to the Peak Park, asking them to reverse their decision on the unobtrusive extension at New Pilhough."

The devil in this story is the failure of the Minerals and Environment Acts to limit the scope of old permissions. If you want to lobby for change, ask your MP to press for another review of the law.

**The narrow lane down which the lorries will need to pass.**

John Youatt



## Youlgrave Horticultural Show

**This year's show** was a great success with plenty of entries particularly in the vegetable and flower classes. The Vicar, Ray Taylor, did very well in these sections, thus proving the power of prayer and hard work. There was good competition in the cakes and jams but the handicrafts section could have been better represented. Perhaps those photographers, embroiderers, knitters, woodworkers and painters etc. living in the village could think of entering their work next year - the Show is open to all. There was one entry in the children's miniature garden class,

well done James Toyne. The Committee are considering new classes, such as Pizzas, for next year. Any suggestions will be welcomed.

After the presentation of 12 trophies the raffle was drawn for 9 good prizes. The afternoon finished with an auction of produce. The table was groaning with

huge onions, leeks, parsnips, beetroot, beans, marrows, potatoes and cabbages and lots of beautiful cut flowers.

Dougie Oldfield closed proceedings with an excellent performance as auctioneer - as well as growing many of the exhibits he is an expert at selling them, making £85 for the Society.

### **The Society's Trophies were awarded as follows:**

Most points in vegetable section	Ray Taylor
Most points in flower section	Ray Taylor
Best exhibit in Vegetable section	J. Oldfield of Biggin
Best exhibit in flower section	Ray Taylor
Best exhibit in floral art	Margaret Deeming
Best exhibit in cookery	Hazel Coupe
RAOB Silver Cup most points in vegetables & flowers	Ray Taylor
D.A. Wardle trophy for most points in cookery & handicrafts	Joan Roper
Mrs. G. Lichfield Trophy for roses	Bob Skinner
Plowright cup for sweet peas	Ray Taylor
Mrs. E. Johnson Trophy for best exhibit in children's' work	Sophia Brocklehurst
J. Rowland Trophy for tomatoes	David Robinson

**F. Parker Butcher Home-made Pork Sausages 5lb for £6 tel 636217**

## Spelling Lessons

In response to our 'Confused' reader's letter in the September edition, here's a list of spellings for 'the most miss-spelt village', as compiled by local historian and former teacher at Youlgrave school, Mr J W Shimwell:

Giolgrave	Yolgrave	Jalgrave	H yolgrave	Hyolegrave
Yolgreff	Yoleg	Yolegreve	Yolegrave	Youlgraue
Welegreve	Yoelgreve	Oelgreve	Yelegreve	Yeolegreve
Yolgreave	Yolgreve	Yollegreve	Jol've	Zolgreff
Yollgreve	Yoligreve	Yollegreve	Youlgreve	Zolgreff
Youlgrave (1492)	Yolgreyva	Yolgreyve	Yeolgreave	
Youlgreave (1595)	Yellegrave	Yollogreve	Yollograve	
Yeollgreave	Youldgreave	Yograve	Isgrave	Yalgrave
Yolegreue	Jolegreue	Iolegrave	Jholegreve	Yelegrave
Yellegrave	Iolgrave	Yholgreve	Yelgreve	Zolgreve

to be continued . . .

An article on this topic, amongst many other interesting local facts, can be found in Julie Bunting's book, 'Derbyshire Superlatives', available from the Post Office.

## BANKSIDERS

We are a Youlgrave-based folk group consisting of five members: Julie Carter, vocals; Tricia Donnison, percussion; Kath Holmes, fiddle; Steve Morris, guitar and Steve Wise, mandolin and guitar.

The band was only formed early this year but, through many a late night's practise, we now have a large repertoire of songs and tunes. Our music covers a wide range, from Irish jigs and reels, through to light jazz classics, with a little Bob Dylan and Van Morrison thrown in for good measure. Also, the band plays some

original material written mainly by Julie, either based on her own experiences or telling a local story.

We are available for parties, local functions and other events at a very reasonable rate!

So, why not come and hear us play at The Farmyard Inn on Saturday 14th November at 8pm (admission £2).

For further details of this event and the Banksiders band please contact us on 636119.

Kath Holmes

## Signed Away by a Dead Man's Hand

The oral tradition of telling a tale has always been strong in isolated village communities like Youlgrave and there are countless stories that have been handed down through the generations, often concerned with the shadier, more mysterious aspects of village life. One such concerns the Farmyard Inn, implying that at some stage in its history of it was 'signed away by a dead man's hand.' The tradition exists in the Shimwell family, which married into the Rowland family in the mid-nineteenth century and which, today, still lives in the properties adjacent to the inn. My maternal grandmother was a Rowland, the daughter of John and Jane, who inherited lands to the east of the inn. John was a stonemason who built the houses, which are now known as Braemar Cottages and Laburnum Cottages. Recently the present owners of the Farmyard Inn, Tony and Sue Howarth, gave their permission to investigate the foundations of the tradition.

In the 1820's, William Rowland owned the property, alias Town End Farm, and farmed the land as a tenant of the Duke of Rutland. He and his wife Hannah had

three children – Thomas, married to Sarah, Betty (Elizabeth) who married James Kenworthy and a younger son, Stephen, who went to seek his fortune in the brewing industries of Burton-on-Trent.

Stephen returned to the village in 1829 to open a beer house in the outbuildings of his father's farm, a controversial act considering that the adjacent premises was the chapel of the Wesleyan Methodist connection. Stephen was also engaged in lead mining at Carlton Hill Pipe, a mine in the Mootlow area above the Hole Mouth, and his fortunes prospered. It was expected that, on William's death, the Town End property would pass to his eldest son, Thomas, but in April 1829, everything was willed to his wife, Hannah, with the statement that on her death, the property would pass to Stephen. An additional clause left £20 to his daughter, Betty Kenworthy.

The existence of a will seems to have been kept quiet, for it was not until Hannah's death in 1843 that tongues began to wag. At this time, it was discovered that the will had only been witnessed by two signatories, Hannah and Stephen, and not by a third person as required by law. The will was not "legally effectuated." The eldest son, Thomas, had predeceased his mother in 1841, leaving all his assets to his widow Sarah and his four sons, William, Edmund, Thomas and James. Sarah and her sons contested William's original will of 1829, but Stephen emerged successful and the Farmyard Beerhouse became his property. Stephen paid the £20

willed to his sister Betty and, for releasing the quitclaim, his sister-in-law, Sarah, and his four nephews each received the princely sum of ten shillings. Thus it was, that the tradition that the Farmyard Inn was 'signed away by a dead man's hand' arose.

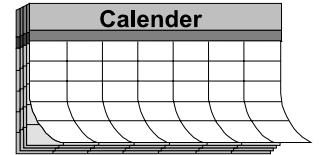
Stephen married Mary Fletcher of Aston-on-Trent and in 1851 was licensee, employing his nephew, William as a manservant. He extended the property by the purchase of the land opposite from the executors of John Sheldon in 1857 for £34 15 10, an area of '463 square yards and 8 feet, more or less.' By his will of 1867, the property passed to his wife Mary, and thence in 1886, to her nephew, James Fletcher of Aston-on-Trent, providing also a gift of 19 guineas to her niece, Mary Beale. James died a bachelor and intestate and the estate passed to Mary's son, Robert Fletcher Beale. The running of the inn was left to various members of the Rowland Family: in 1881, James Rowland was tenant and in 1895, Walter Kenworthy was in charge, both grandsons of the original owner, William Rowland, the dead man whose hand is at the centre of the tradition.

Footnote: Mrs Dorothy Titterton (née Kenworthy) was born at 7pm 29<sup>th</sup> November 1895 at the Farmyard Inn. She celebrated her 100<sup>th</sup> birthday there in 1995 but sadly died earlier this year.

JW Shimwell, Braemar Cottage

**F. Parker Butcher Bugle Special 5lb Pork Chops for £5 tel 636217**

# Forthcoming Events



**Friday 16<sup>th</sup> October**

Youlgrave All Saint's C of E Primary School Race Night.  
The Village Hall, 7.00pm.

**Sat & Sun 17<sup>th</sup>&18<sup>th</sup> October**

Painting Sale for West Derbyshire Mental Health Support Group.  
Hunters End, Middleton by Youlgrave, 11am - 4pm.

**Saturday 31<sup>st</sup> October**

Attic Sale for Middleton Entertainments Committee. Youlgrave Village Hall, 9.30am - 1.00pm.

**Saturday 14<sup>th</sup> November**

Banksiders Folk Group. The Farmyard, 8pm (admission £2).

**Wednesdays**

Life Drawing Classes with Diane Kettle. Middleton Village Hall, 7.30pm.

**Wednesdays**

Theatre Workshop with Jack Blackburn (tel. 636689 or 636043). Greenfields Farm Barn, 7.00pm.

**Thursdays**

Peak Rural Welfare Rights Project 'Benefits Advice'. The Doctors' Surgery, 10 - 11.30am.

**Fridays**

Yoga with Iris Pimm at Greenfields Farm Barn, 9.30 - 11.00am.

## Please let us have more details of events for the next edition

The Publishers accept no liability for the accuracy of the information given.

# September WI

Youlgrave WI re-opened in September after the summer break, with a minute's silence in respect of Mrs Alice Upton, a faithful member for many years, who passed away recently.

Early in August five members enjoyed an evening at the pre-Bakewell Show Cookery Demonstration, and some members also attended the show.

As a follow-up to the gardening forum

held earlier in the year, a party visited Dove Cottage garden and came home with plant cuttings and reported to this meeting on the health (!) of these cuttings. We look forward to hearing of their progress over the next few months.

It was good to welcome the speaker, Elaine Kay, whose subject was 'Skincare and Facials', and to learn the best way to look after ourselves. The younger members will be able to make full use of the information and surely none of them will develop wrinkles - but for some of us, we can only try to improve on the wrinkles we have!! Mrs Mary Needham was given a manicure to celebrate her 85<sup>th</sup> birthday. The rest of us are all trying to develop 'pretty hands'.

Mrs Jean Frost won the competition, and raffle prizes went to Mrs M Deeming and Mrs C Fryer.

We were brought up to date with all the business and told the dates for the Autumn Council and Group meetings which have been arranged. We were asked to put forward our ideas for Christmas celebrations

Next month we have the pleasure of welcoming Mr Charles Wildgoose, speaking on 'Derbyshire Dales and Beyond'.

New members are always welcome.

**KMB**

A N N U A L	Amy's Dairy - - - - -	636639	S P O N S O R S
	Dave Axon, Dorling Kindersley Adviser - - -	650628	
	Castle Farm, B&B, Caravans & Camping Barn	636746	
	Chapel House Upholstery - - - - -	636665	
	IT's the Business, Computer Training - - 01298	872313	
	Eric Goodwin, Plasterer & Tiler - - - - -	636627	
	The Farmyard Inn - - - - -	636221	
	The Fish & Chip Shop - - - - -	636379	
	B&M Frost, Caravan Site - - - - -	636302	
	Roger Green, Val Verde, Bakewell - - - - -	814404	
	David Hobson, Painter & Decorator - - - - -	636641	
	Hollands Butchers - - - - -	636234	
	The Knoll Club - - - - -	-	
	Peter Knowles Architect - - - - -	636362	
	Kath McCloy, Violin & Piano Teacher - - -	636119	
	Meadow Cottage Tea Garden - - - - -	636523	
	A Murray, The Wee Dram, Bakewell - - - -	812235	
	Doug Oldfield, Handyman & Sweep - - - -	636797	
	Parkers Butchers, Wines & Spirits - - - -	636217	
	Peak Rural Welfare Rights Project - - - - 0800	214233	
Eleanor Pilkington, Peak PR - - - - -	636079		
Iris Pimm, Greenfields Farm Barn - - - - -	636341		
The Post Office - - - - -	636201		
QC Curtain Company, Curtains and Blinds - -	636161		
SR & JK Roper, Builder & Joiner - - - - -	636498		
Roses Newsagents - - - - -	636874		
Barbara Scrivener, Hand Help Healing - - - -	636601		
M&D Shimwell, Haulage, Sand, Cement & Blocks	636305		
A Twyford, Motor Engineer - - - - -	636093		
John Youatt, Planner - - - - -	636241		
Youlgrave Garage - - - - -	636943		
Youlgrave Parish Council - - - - -	-		

**The Parker Family and Friends**  
would sincerely like to thank everyone who made their Coffee Evening such a success. A grand total of £607.00 was raised for the Imperial Cancer Research Fund.

**Middleton into the Millennium**

Middleton and Smerrill Parish Council are looking for ideas from parishioners for projects to celebrate the Millennium.

Peter Cavendish has written to each parishioner asking for suggestions. Please make sure you complete this form and return it to Alan Burgess by 31<sup>st</sup> October. There will be a meeting on Thursday 26<sup>th</sup> November, at 8pm, to discuss the matter further. This is your chance to have a say in what happens in your village.