



Bugle



A chance to blow your trumpet for the villagers of Alport, Middleton and Youlgrave

No. 5

June 1998

Maybe it's Summer

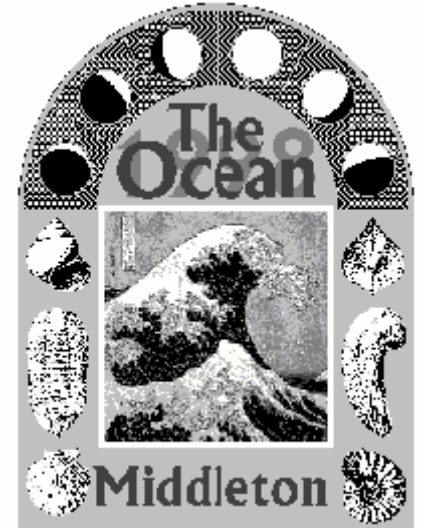
this spontaneous entertainment cannot be bettered!

Buds are bursting, birds are singing and the cricket season is underway. We welcome the new overseas player, Murtaza 'Monty' Jivraj, to the Youlgrave team. With his help let's hope they can maintain their high standard of play and make it a hat-trick for the Orme shield. Go for it lads.

The Church Garden Party will be held in the beautiful grounds of the Vicarage on Saturday 13th June this year. We hope the weather will be kind for this family day out with colourful stalls, run by parishioners and famous refreshments provided by the Middleton ladies. Children from the school will dance and the Rose Queen will be crowned.

The Bugle wishes Youlgrave soon-to-be-weds, Nicola Asquith and Martin Hill, a long and happy marriage. May all their troubles be little ones!

'Summer is a cummin' in' and where better to spend it than Alport, Middleton or Youlgrave. Now that the sun is shining people emerge from their houses, gossip is rife and stories are told. Where better to hear them than round the Well Dressing board? Your back may ache but you won't notice because



YOULGRAVE ALL SAINTS PRIMARY HAS INSPECTORS' SEAL OF APPROVAL

Education watchdogs reporting on standards and achievements at Youlgrave Primary School, have praised a range of achievements in a newly published report. A team from the Government's Office of Standards in Education, OFSTED, spent a week at the school in March observing lessons and talking to parents, pupils, staff and governors.

They describe All Saints as "a caring school with many good features which provides a sound education for its pupils." The school's 109 pupils, who are taught in four classes, are said to make a good start to their education at Youlgrave Primary School. Pupils' attainments in Maths, English and Science are in line with national standards by the end of their primary education, whilst Design Technology, History and Geography exceed the national standard. They enjoy books and make good progress in learning to read. Other areas singled out for praise are:-

- Good quality of teaching, with over 92% of lessons graded satisfactory or above
- School attendance and attitudes to learning are very good
- Behaviour throughout the school is good

- Well planned support for pupils with special educational needs
- Strong links with parents of youngest pupils ensuring good preparation prior to starting school

Inspectors also identified a number of issues for further action to raise standards, including:-

- Reviewing the timetable arrangements and the balance of time between core and foundation subjects
- Improving standards in Information Technology

They added that governors should ensure more time is allocated to curriculum monitoring and teachers' planning. A complaints policy, setting out clear procedures, should be made available to all parents and the school's partnership with parents should be further developed.

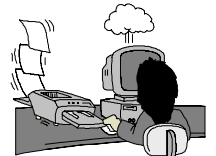
Head teacher, Mr Shaun Snow, welcomed the report: "It is encouraging that the inspection team has recognised the school's many strengths and skills. The dedication of the staff is acknowledged as a very positive factor. We will now work to raise standards further still, by addressing the issues highlighted."

If you would like a summary of the report or more information please contact Mr Snow.

Published by Bugle Publications. **Editor** Emma Youatt, Square House, Middleton by Youlgrave, Bakewell, Derbyshire. DE45 1LS. Phone/Fax **01629 636241**, e-mail EYouatt@AOL.com

Printed by **Reprint** Bradford Road, Youlgrave 636410 as a community service free of charge.

Contributions to arrive by the 17th each month to Square House or to The Post Office



The Bugle is sponsored by Rural Transport Development Project



The Magic of Welldressing

Let's take the history and technicalities as read – this is simply a personal view of a cherished tradition.

Having designed Welldressings since 1950, I am still always convinced I can't do it! I do not enjoy drawing (a basic essential of the designers task) but I do love working with my hands, especially when working with other people.

What rich rewards I reap then for my irksome labours in the design stage when the clay is on the boards and we get down to work. The designer has an important role, but no one person alone can create a Welldressing. It is essentially a team task. For me there is a real magic in a group of people, not necessarily artistic in their own right, coming together to create something uniquely beautiful, executed with great skill.

You might say Welldressers have a head start working with such inherently beautiful materials – what a palette nature provides! But nature also sets limits and this, for me, is a stimulating and exciting challenge. So is finding materials to represent something we have not previously portrayed – rhubarb seeds were an inspiration for a shepherd boy's sheepskin jacket.

Whatever the materials the variation in seasons provide, the artistic achievement of any dressing is totally dependant upon the enthusiasm, dedication, patience, good humour (and don't we need that!) and the ability of team members to rise above the aches and pains they get by the end of the week.

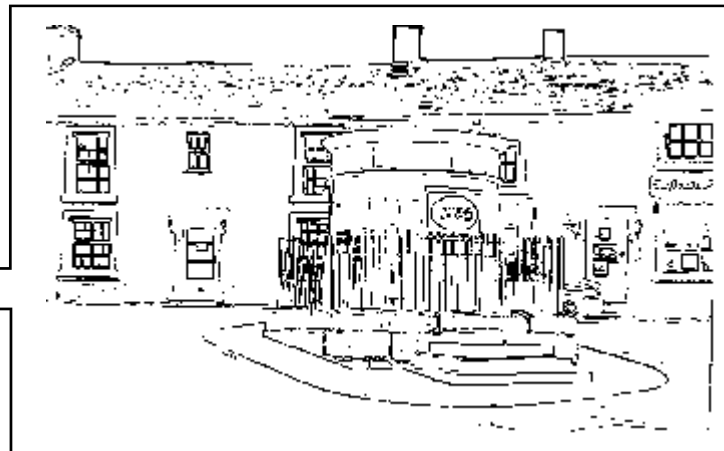
Every worker's contribution is equally valuable - that is special.

It is a rare privilege to work in that kind of situation; it creates its own magic. Our common purpose and shared memories and experience creates a warm camaraderie which is rekindled and strengthened year on year.

The magic of Welldressing not only captivates, to the point of addiction, those involved, it extends to the village as a whole. It inspires pride in the maintenance of an ancient tradition and in the high standard of work exhibited. A pride given practical expression through the tidying of gardens etc so that, come the day, the village looks its best.

I, and no doubt others, value the opportunity to meet seldom-seen friends and to renew acquaintances. Yes, great demands are made upon our time, our patience and our stamina, but as Welldressers we are abundantly rewarded. There is a sense of shared achievement and a pride in carrying on our inherited tradition. For those of us who no longer live in Youlgrave, there is magic in returning to our roots, a sense of continuity; and still belonging. The magic of Welldressing draws people 'home'.

Margaret Fell



A Welldresser in Exile

Whilst the origins of the unique Derbyshire custom of Welldressing remain obscure and the subject of frequent debate, the purpose and process of the annual festival are well established.

What I believe is less well known, however, is the diversity of the people involved and their exceptional level of commitment.

At the beginning of this century, Welldressing was a male preserve; women provided the refreshments and garlands of flowers to surround the Welldressing and the well, or tap. How things have changed! Now we not only find female dominance (and where are the men when you need them ... for the mucky work and heavy lifting?) but also those moving into the village applying themselves with a level of enthusiasm which would inspire any local with the purest village "pedigree". In fact there are those who have moved away, having spent many years in Youlgrave developing their welldressing skills, yet still return to contribute their five thousand buttercup petals every year - this is the welldressing bug!

There is, however, a third type of Welldresser – and that is the Welldresser in Exile! I believe that I have a reasonably respectable pedigree having been brought up in Youlgrave and with my mother coming from an established Youlgrave family. In fact my only claim to fame is that I am a third generation Welldresser; my maternal grandfather designed the Reading Room Well from 1904 - 1914, with my father designing the same well from 1956 to the late 70's. It was during this time that the site of the Welldressing was moved to the church tower mainly

for safety reasons because of increased traffic congestion. In spite of this close connection with Welldressing and my continuation as a designer, I have not lived in the village for over twenty years.

Let me mention just a few of the difficulties of being a Welldresser in Exile. Having always lived in an environment which gave priority to Welldressing - even our family obliged by being born when I would not be hindered by demanding babies or advanced pregnancy.

Years of perseverance in neighbouring Staffordshire and Shropshire have succeeded in educating friends and neighbours. They are now familiar with our annual, midsummer exodus, armed not only with the usual paraphernalia of a family holiday, but with carloads of buckets, hydrangeas, electric cable, half the shrubbery and prize blooms.

Initially, the local primary school and secondary schools were a little sceptical but eventually came to take advantage of a wonderful opportunity for educational visits and extended topic and art work. Our son, at the age of eleven, was allowed to join the family on the condition he wrote an article about Welldressing and give a talk to the school - I seemed to sense ambivalent feelings towards the age-old custom on this occasion!

Ruth M^cGrath



**Rural Transport Development Project is an initiative funded by
The Rural Development Commission,**



Youlgrave Welldressing 1998

Spring is here again (or sometimes it seems like it) and that means Welldressing is not far away. The pleasure of anticipation will be tinged with sadness as we remember that this will be our first year without Jim Shimwell. However, we welcome John Marple and Nick Stacey who are each designing a Welldressing for the first time. As always, we marvel at Margaret Fell, and Fred Shimwell who are both celebrating their 49th or is it 50th year as designers (an achievement which must be unsurpassed anywhere in Derbyshire at any time) and Ruth McGrath who carries on the tradition her grandfather began over 90 years ago.

The Welldressings go up on Saturday 20th June and the procession and blessing of the wells will take place from

2.30pm. Welldressings then remain on display until Friday. The clay is puddled and put on the boards on Monday the 15th and work on the designs starts on the Tuesday or Wednesday building up to the real test of stamina on the Friday night. Fountain Well will no doubt be the last to finish, as always. Last year as I recall it was all over bar the shouting by about 1am which is better than the year before when we were still at it after dawn when the boards were erected!

We are anxious to recruit new enthusiastic Welldressers of all ages. Even if you feel you are too clumsy to apply delicate petals, there are plenty of other jobs. I finally plucked up courage to have a go a couple of years ago. I was surprised to find that I was not completely useless, just a bit of a nuisance who needed careful watching! Anyway, don't be deterred. If you would like to help, in the next few weeks and during the week commencing 15th June, please give me a ring on 636341.

Peter Pimm (Secretary, Youlgrave Welldressing Committee)

May Crossword Solution

Across 3 Snake 6 Manx 7 Iguana 8 Cat 13 Poodle

14 Rat 15 Hamster 16 Dog 17 Terrier 18 Puppy

20 Pigeon 22 Canary 23 Goldfish

Down 1 Rabbit 2 Cockatoo 4 Pony 5 Parrot 6 Mouse

9 Budgie 10 Terrapin 11 Siamese 12 Kittens 13 Pigs

19 Pug 21 Gerbil

World Cup Football Pools

Pick up a coupon at £1 from Tony Howarth at The Farmyard. Profit goes 50-50 to the lucky (or is it skillful) winner and Youlgrave Primary School.

HEALTH & ENVIRONMENT MONTH

June 1998 is Derbyshire Dales District Council Health and Environment Month. A programme has been put together for all the family promoting healthy activities whilst maintaining a caring and responsible attitude to the environment.

The programme includes a Wildlife Walk in Youlgrave. The four mile walk through Bradford Dale meets at **Coldwell End** car park at 2pm **Sunday 28th June** (for details contact Ian Weatherley 636350).

For further details on Health & Environment Month, including other events, contact Peter Corke at County Offices tel.580580 extn. 2204.

Dear Bugle Reader,

Now the cold rainy days of winter are over, new budding artists will be seen in the dales and meadows of our beautiful Derbyshire. The still life and still models of the studio are put away for a season whilst we enjoy the great outdoors.

By choosing a different location each week we can experience a variety of landscapes and light. Even if you have never painted before you will be made most welcome.

Two courses are available:

9 weeks on Friday afternoons starting at 1.30pm on June 5th.

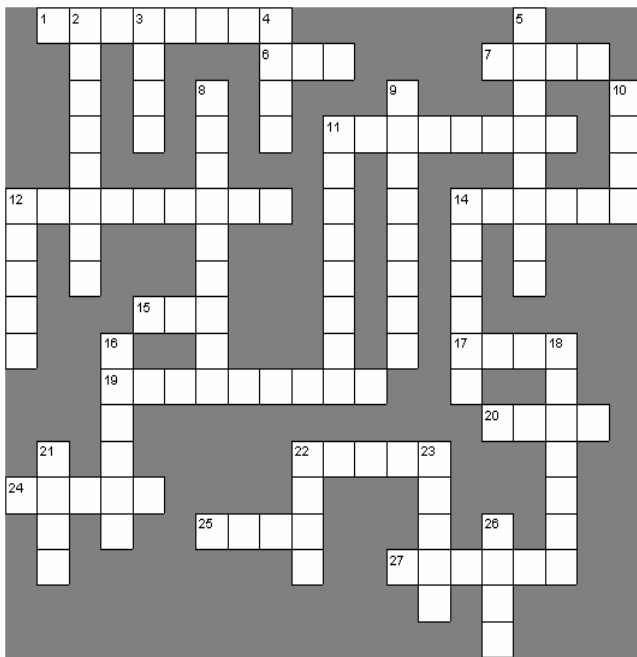
6 weeks on Wednesday evenings 6.30 till dark starting on June 24th.

If you would like further details contact me on 636763.

Yours in watercolours, pastels or acrylic paint!

Diane Kettle

Welldressing Crossword



Across

- 1 The first outline, dot-to-dot (8)
- 6 Produced by geraniums (3)
- 7 Used for a thick yellow outline (4)
- 11 The Vicar gives each well this on Saturday (8)
- 12 Cone of the laurel (5,4)
- 14 The part of 18D used (6)
- 15 Margaret's well (3)
- 17 The privet's is used for dark green (4)
- 19 See 21D
- 20 Paint it on to blacken black (4)
- 22 It's thanks to this that we get the tradition (5)
- 24 & 25 Before we start colouring this is the strong outline (5&4)
- 25 See 24
- 27 Mock orange provides white ones (6)

Down

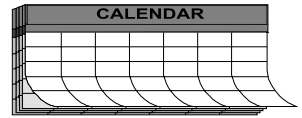
- 2 Plant known as bread & cheese (8)
- 3 Puddled on Monday (4)
- 4 & 10 background found on the stones (4&4)
- 5 Always the controversial well (8)
- 8 Band conductor (4,5)
- 9 Delicate aromatic petals to give us red (8)
- 10 See 4
- 11 Houses near Fred's (8)
- 12 Soaked in the river (5)
- 14 To mix 3D with your feet! (6)
- 16 The children's well (6)
- 18 The main source of colour (7)
- 21 & 19A A favourite for the sky
- 22 One of the five (4)
- 23 Not such a hot tub where the boards get their soak (5)
- 26 Lots of views (4)



The European Commission, The Peak District National Park Authority and Staffordshire and Derbyshire County Councils



Forthcoming Events



- Saturday 13th June** Youlgrave and Middleton Churches Garden Party. The Vicarage, 2 – 4.45pm
- Saturday 20th June** Youlgrave Well dressing procession and blessing of the Wells, 2.30pm.
- Sunday 21st June** Outdoor service with Youlgrave Band. Holywell Lane, 6pm.
- Sunday 21st June** Youlgrave Band concert. Holywell Lane, 7pm.
- Monday 22nd June** Youlgrave Band concert. The Farmyard, 7pm.
- Sunday 28th June** Guided Wildlife Walk 4 miles. Coldwell End car park, 2pm. (contact Ian Weatherley 636350)
- Saturday 4th July** Musical Evening with Buffet Supper, The Cheese Factory, Elton, 7.30pm. (Tickets from Michael Colin 636451)
- Wednesdays** Life drawing classes with Diane Kettle. Middleton Village Hall, 7.30pm.
- Wednesdays** Theatre Workshop with Jack Blackburn. Greenfields Farm Barn, 7.00pm. (tel 636689 or 636043)
- Thursdays** Peak Rural Welfare Rights Project 'Benefits Advice'. The Doctors' Surgery, 10 - 11.30am.
- Fridays** Yoga with Iris Pimm. Greenfields Farm Barn, 9.30 - 11.00am.

Please let us have more details of events for the next edition

The Publishers accept no liability for the accuracy of the information given.

Make Your Computer Work For Your Business

Do you want to computerise your business or increase the efficiency of your existing computer packages?

At 'IT's the Business' we offer Individual IT Training, designed to fit your own personal needs, delivered within your own home or business, allowing you to utilise your computer to the best advantage.

If your business is not yet computerised, we are able to train you using our own portable equipment, whilst you consider the advantages of computerisation.

As the training is individually suited to your needs, it doesn't matter how much or how little computer knowledge you have. We have clients ranging from total beginners, to

those who have completed standard IT Training courses and are now wishing to apply this knowledge to their own business.

The training is usually completed in two hour blocks of tuition. Intensive one-to-one training for longer periods can become counter-productive. You may only need a few hours tuition or perhaps a few hours a week for several weeks.

This type of training may attract a subsidy of up to 50%, actioned through Business Link. Some local farms and businesses are already benefiting from this training and funding, as a result of 'Project LEVER'. Although 'Project LEVER' has now been completed, the training and funding are ongoing.

For more information on the company telephone Julie or Sue on 01298 872313. We can arrange to visit you for a free Training Needs Analysis session, to discuss funding and to outline a suitable training programme to fit your requirements.

A N N U A L	Amy's Dairy - - - - -	636639
	Dave Axon, Independent DK Advisor - - - -	650628
	Castle Farm, B&B, Caravans & Camping Barn	636746
	IT's the Business, Computer Training - - 01298	872313
	Eric Goodwin, Plasterer & Tiler - - - - -	636627
	The Farmyard Inn - - - - -	636221
	The Fish & Chip Shop - - - - -	636379
	B&M Frost, Caravan Site - - - - -	636302
	Roger Green, Val Verde, Bakewell - - - - -	814404
	Hollands Butchers - - - - -	636234
	The Knoll Club - - - - -	-
	Peter Knowles, Architect - - - - -	636362
	Kath McCloy, Violin & Piano teacher - - -	636125
	Meadow Cottage Tea Garden - - - - -	636523
	A Murray, The Wee Dram, Bakewell - - - -	812235
	Doug Oldfield, Handyman & Sweep - - - -	636797
	Parkers Butchers, Wines & Spirits - - - -	636217
	Peak Rural Welfare Rights Project.- - - - 0800	214233
	Iris Pimm, Greenfields Farm Barn - - - - -	636341
The Post Office - - - - -	636201	
SR & JK Roper, Builder & Joiner - - - - -	636498	
Roses Newsagents - - - - -	636874	
Barbara Scrivener, Hand Help Healing - - - -	636601	
M&D Shimwell, Haulage, Sand, Cement & Blocks	636305	
A Twyford, Motor Engineer - - - - -	636093	
Youlgrave Garage - - - - -	636943	
Youlgrave Parish Council - - - - -	-	

S
P
O
N
S
O
R
S

MIDDLETON ANNUAL PARISH MEETING

These meetings are different. You can raise any subject to do with the village and be listened to. Why do so few people come? This year there were 5 of us (I don't count the other 6 council members and the Parish Clerk - they had to be there anyway). It may be that the Parish Council does an outstanding job and we just want them to carry on; more probably we just do not care. After all we only have to pay the rates and live with their planning and other decisions. Next year The Bugle will remind you of the date of the meeting and, if possible, some of the topics that will get aired. Hope you will be there.

CAN YOU FILL THIS SPACE?

The Bugle is always looking for **Smaller** items too.

MILLENNIUM

The Youlgrave Millennium meeting was held on 11th May. A list of suggested ideas will be circulated to every group and society in the village and a further meeting will be held in September. If you have an idea and are willing to help, then let The Bugle know.



The Bugle is sponsored by Rural Transport Development Project

