



The

Bugle



A chance to blow your trumpet for the villagers of
Alport, Middleton and Youlgrave

No.3

April 1998

It's good to talk...

Well here we are on our third issue already and the daffodils are opening their bugles to welcome the spring tra-la-la....

This issue includes a report on the meeting held recently in Youlgrave Village Hall to discuss the Millennium. You can be sure 'The Bugle' will do its bit towards the celebrations/events/projects.

Many thanks to the sponsors who are supporting 'The Bugle's' expenses. More are welcome and we suggest £10 per year. This is a **free** newsletter for the villages of Alport, Middleton and Youlgrave and so some income is necessary. We are also hoping to deliver it free to each household soon.

We'd also like to thank those contributing text to 'The Bugle' and, yes you guessed it, we want more. For the reluctant writer, we now have a 'Roving Reporter' who will do the work for you. For the writers amongst you, copy should arrive before 17th of the month with the editor (see below) or Ann Knowles in Youlgrave, so keep it coming in. We want to hear what you have to say!

Parish Council AGM

Youlgrave Village Hall
7.00pm Tuesday 31st March.
Come and make your views heard and give your plans a chance to happen!

All Welcome!

The Youth Hostel alterations will be finished around Easter and an open day is planned. A part-time assistant and a cleaner will be required.

From Lever to Leader

As many readers will know, Project **LEVER** has been working in and around Youlgrave for the past six months, looking at ways for the community to improve its local economy. Fifteen people took part in a lively workshop held in the Village Hall on 2nd March, to begin taking forward some of the ideas raised so far. This was not an evening for couch potatoes as people threw themselves into the various activities to express their views on a series of options.

The event was presented jointly by Marilyn Crutcher, who has been managing Project **LEVER**, and me, Paul Rush, of Derbyshire Rural Community Council (DRCC). I hope to carry on working with the community to help you convert the ideas into practical projects, now that **LEVER's** work is at an end.

DRCC is a Wirksworth-based charity which helps rural communities, like Youlgrave, take action to improve their

wellbeing. I am their fieldworker for this area, with responsibility for a European fund with another awful name, **LEADER II**. Only a few areas of England are eligible for this support, and I hope that Youlgrave can receive its fair share.

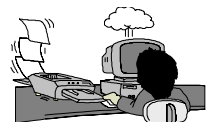
However, this can only be brought about if it has the support and commitment of local people. The village will need to draw up a plan which is nothing too grand but simply outlines things which you want to see happen. The workshop concluded that the main areas for improvement are parking, signposting, visitor information, village promotion, public transport and the establishment of an after-school club.

If you are interested in these or any other village projects and would like to help get up to half the cost met by **LEADER II**, you are invited to a meeting, to be held in the committee room of the Village Hall on Thursday 23rd April at 7.30pm, when an outline of the Plan will be drawn up. I look forward to seeing you there.

Paul Rush

Published by Bugle Publications. **Editor** Emma Youatt, Square House, Middleton by Youlgrave, Bakewell, Derbyshire. DE45 1LS. Phone/Fax **01629 636241**, e-mail EYouatt@AOL.com

Printed by **Reprint** Bradford Road, Youlgrave 636410 as a community service free of charge.



The Bugle is sponsored by Youlgrave Parish Council

Valpo View

Walking the dog in the winter has its hazards. I tackle Spring Lane with trepidation, fearing the mud and the slippery slope. No more! The path has been re-routed and carefully resurfaced. The walking is easy. It's not so natural, but much more user-friendly.

The TV news reporter following Prince Charles announced "Visitors to Bhutan have to pay £200 a day. Unfortunately, this cuts out backpackers and the like, but it keeps the country like this," and he gestured to a pristine view.

This, in a nut shell, is the conservation debate. On the one hand, improve the path and more walkers are encouraged, tourism increases and there is supposed to be more income and work locally. On the other, discourage use by making access more difficult, fewer people come to enjoy the countryside, but the wildlife and fragile environment thrive.

Do the number of visitors destroy the very beauty they come out to enjoy? Should we get used to a downgraded environment? Does the wildlife have more right to its home than we have to invade it? At what point do we draw the line? Can we draw the line?

Bradford Dale is suffering from the number of visitors it attracts. The track is being eroded. Notice how the sewage manholes stand proud of the surface with which they

were level. The environment is suffering too. The variety of river birds is decreasing, paths are widening and appearing where none were before, the fishpond walls are collapsing and litter is evident.

There is also no doubt that a wider range of people are enjoying the dale. More families with young children are coming, long distance walkers pass through, elderly folks potter. If I lived in an urban area this would seem a paradise, but I have lived here long enough to know it is only a pale shadow of the paradise it was.

There are campaigns to save tigers in India or elephants in Africa but it can be more complicated closer to home, although the issues are the same. I want there to be enough peace for the autumn kingfisher to stay all year. I want fewer visitors, who can then enjoy the full potential of the glory of this dale. I am not happy to settle for second best.

You may have a different point of view. Whatever it is, each of us has an effect on how the dale is managed, whether we do it actively or by doing nothing. I believe it is important to be aware of the issues, to debate openly the consequences of actions. Do you want footpaths to be surfaced, and if so how? Are there ways of dealing with the litter? Do we see ourselves as long term custodians of something infinitely precious, exploiters of the moment, or something in between? What do you think?

Jeniwren.

Life Drawing... The bare essentials

Middleton Village Hall,
7.30pm Wednesdays.

"You what, petal?"
"It's that Diane Kettle
She has two hour sessions
of Life Drawing lessons."

"But I can't draw
Flesh in the raw
And I've not been to art class for ages."
"Well, come on with me
And I think you'll see
It's as easy as drawing your wages."

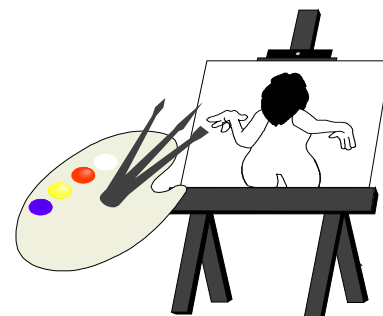
The models who pose
Without any clothes
Are professional, and helpful and still.
Sometimes young, sometimes old,
Some are coy, some are bold.
Might be Sue, Bob or Dave
Jack or Jill.

But then as the evenings get warmer
Diane takes her class down the dale
Sketching river and tree
Quite naturally.
Shadow and light
Dull colours and bright
The vivid, the dark and the pale.

So if you suspect you've a talent
Or just want to try something new
Don't dally and stall
Give Diane a call
And she will be pleased to teach you."

Diane Kettle,
Corner Cottage, Middleton.
Tel: 636763

There are also classes on Friday
afternoons at Bakewell and on Tuesday
evenings at Buxton.



From the cookhouse door....

DESPERATE DAN PIE

Shortcrust Pastry, enough to line a medium pie dish
1lb sausagemeat
1 medium onion, chopped
½ packet of thyme and parsley stuffing (this is the quick way. You can, of course, make up your own favourite stuffing mix)



Line a flan dish, then sprinkle a layer of stuffing over the bottom.
Divide the sausagemeat into two and place one portion over the stuffing and sprinkle with half the chopped onions.
Repeat this process and then top with a pastry lid.
Brush with beaten egg to glaze and bake in the oven at gas mark 6 or equivalent for approximately 30-40 minutes.
This is super served hot with winter vegetables or makes a lovely cold pie with salad and pickles.

A young man's fancy.

Spring is my favourite time of year, but was more especially so when I was a practising Vet. I felt privileged to drive around the country watching the signs of new life emerging: the trees bursting into bud, spring flowers, birds building nests and new-born farm animals.

I loved to see calves struggling to stand on spindly legs and lambs, minutes old and not yet dry, butting their mothers' teats, tails all a-quiver.

I was proud that every year I was instrumental in bringing some of these babies into the world. Mostly this consisted of lying up to my armpits in cow on a cowshed floor or lambing ewes by torchlight using soap as hard as stone and icy water straight from the trough but occasionally these crises produced scenarios which to me were amusing. I remember calving a cow at a farm in the

Tideswell area one afternoon. The cow was small and the calf was a large example of a continental breed. I was being helped by the farmer, his wife and son and frankly we were finding it hard going. They didn't seem to be pulling very hard and I soon muttered my favourite aphorism, "You lot pull, I'll do the grunting for you".

Suddenly the farmer, who I found out later was given to fainting fits, moaned and sat down under the wall white as a sheet. His wife said, "Is your Dad gone, Jim?" "Gone, Gone. What do you mean gone?" I shouted. Interpreting this as the country euphemism for dead, I rushed over to him prepared to carry out my version of artificial respiration. The son, seeing me panic, calmly said, "You come back here Chris. This is more important. Dad'll be round in a minute and we want this calf alive."

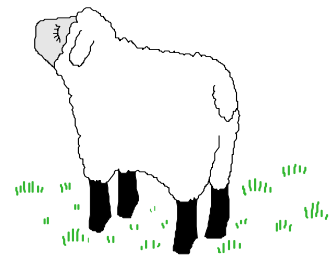
When Nicola, my eldest daughter, was about five years old, she started to accompany me on calls at weekends and in the evenings. She became useful holding syringes, bottles of antibiotic and calving ropes and soon began to absorb the farming atmosphere and know what was required. One spring evening we visited a ewe which couldn't lamb at a farm near Youlgrave.

There were lots of ewes milling around in the pen so I placed Nicola for safety on some straw bales. I soon sorted out the problem. The lamb was coming with its head back, but was quickly straightened and brought out into a cold inhospitable world.

Because the lamb had been delayed in the birth process, it was full of fluid and not breathing, a situation normally rectified by the use of gravity and centrifugal force to clear the fluid from the lungs.

I was just about to perform this manoeuvre when a little voice from the sanctuary of the straw bales exclaimed, "That's it, Daddy, swing the bugger round !!"

CJS



March WI Meeting

On March 10th Youlgrave W.I. was treated to "Life in Beijing" by Mrs Joyce Gould. The 37 members who attended were served lovely home made refreshments after business and the slide show.

Next month on 14th April Mrs Gloria Havenhand will be speaking on "Women in the Commons". This is sure to be a very lively meeting. Ladies wishing to join us will be very welcome.

QUIZ FOR THE MONTH. Only for fun, but you may need to do some research.

- 1) Magnificent Seven Actors.
- 2) Doctor Whos on TV.
- 3) Seven Wonders of the Ancient World.
- 4) Seven Deadly Sins.
- 5) Cinque Ports.(Yes, seven of them.)



March crossword solution.

- 1a Garlic Mustard 3a Forget-me-not 4a Ground Ivy 6a Dog Rose
 7a Dog's Mercury 10a Sweet Cesily 12a Coltsfoot 13a Bluebell
 14a Mare's Tail 16a Gorse 17a Celandine 18a Honesty
 19a Ladysmock 20a Daisy
 1d Green Hellebore 2d Dead Nettle 5d Primrose 8d Red
 Champion 9d Groundsel 11d Clover 15d Cowslip

The longest car park in the county



You'd think the trip

Youlgrave

So

They park 'em in the high street.
 They park 'em in every bystreet.
 They'd park 'em by the YHA
 (if they could).

And though it's law infringement,
 They park 'em on the pavement.
 They park 'em by the butcher,
 (who doubles as a grocer).

But,

When parking by my house, Sir,
 Please park in such a manner
 that lets me get to
my front door.

to the shops and school and the post and the chips was short

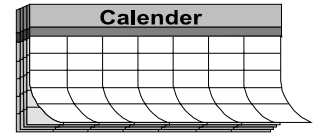


enough to walk. But No! The car park's far too

far away. It's even farther than the walk to buy a paper.

Tuesday 31st March 7.00pm Youlgrave Village Hall

Forthcoming Events



- Sunday 29 March** Youlgrave Carnival Committee Pop Quiz. Bulls Head, 8pm.
- Tuesday 31 March** Youlgrave Parish Council Annual meeting - 7.30pm.
- Wednesday 8 April** WI Litterpick. Meeting at the Village Hall, 1.30pm. Bring bin liner and rubber gloves.
- Wednesdays** Life drawing classes with Diane Kettle. Middleton Village Hall, 7.30pm.
- Wednesdays** Theatre Workshop with Jack Blackburn tel 636689 or 636043. Greenfields Farm Barn, 7.00pm.
- Thursdays** Peak Rural Welfare Rights Project 'Benefits Advice'. The Doctors' Surgery, 10 - 11.30am.
- Fridays** Yoga with Iris Pimm at Greenfields Farm Barn, 9.30 - 11.00am.
- Saturdays** Watercolour Painting & Drawing classes with Madeline Gay tel 813031. Greenfields Farm Barn, 10 - 12pm.

Please let us have more details of events for the next edition

The Publishers accept no liability for the accuracy of the information given.

Computer Lifeline at the.dia/l

You don't have to be a computer wizard to take advantage of the new learning opportunities that computers and the Internet offer. You'll surprise yourself with how quickly you'll boldly go where you've never gone before! And should you need some help, trained staff are always on hand for friendly advice.

What is 'the.dia/l'? A drop in shop, a place of learning, an 'electronic campus', a business centre, a training ground, a place to browse and enquire . . . **whatever you make of it.** Like

Dr Who's Tardis, once inside its potential uses expand before your eyes, whether for study, business, job opportunities, research or leisure.

'The.dia/l' stands for Derbyshire Internet and Access to Learning. As you'd expect from a venture between the University of Derby and High Peak College, Buxton, this computer service aims to give access to education to the widest possible audience in Derbyshire, young and old alike.

You can use the world of multimedia and interactive

technology to study or explore, exchange information and communicate, or simply for fun. Whether you want to check something out between shopping trips, find a quiet spot to do some research or homework, access a business database, e-mail friends or business contacts, or simply talk to people from Toronto to Tokyo, the.dia/l puts the world in reach.

Whether just curious or really committed, you can chat about your interests and needs with staff and let 'the.dia/l' help you get the most from the technology available.

'The.dia/l' is easily accessible, located on Firs Parade. It is open from 8 'till 8, Monday to Friday, and at weekends Saturday 10am - 6pm and Sunday 10am - 4pm.

Prices start from £2.20 an hour for the homework club with courses starting at £25. Courses are free for those living in Alport, Middleton and Youlgrave and other parishes in the European '5b' area, along with some benefits recipients. For more information telephone Helena or Ann on 01629 760650.

A N N U A L	Amy's Dairy - - - - - 636639 Castle Farm, B&B, Caravans & Camping Barn 636746 Doug Oldfield, Handyman & Sweep - - - - 636797 Eric Goodwin, Plasterer & Tiler - - - - - 636627 The Farmyard Inn - - - - - 636221 The Fish & Chip Shop - - - - - 636379 B&M Frost, Caravan Site - - - - - 636302 Hollands Butchers - - - - - 636234 The Knoll Club - - - - - - Peter Knowles, Architect - - - - - 636362 Meadow Cottage Tea Garden - - - - - 636523 Parkers Butchers, Wines & Spirits - - - - 636217 Peak Rural Welfare Rights Project.- - - - 0800 214233 Iris Pimm, Greenfields Farm Barn - - - - - 636341 The Post Office - - - - - 636201 SR & JK Roper, Builder & Joiner - - - - - 636498 Roses Newsagents - - - - - 636874 M&D Shimwell, Haulage, Sand, Cement & Blocks 636305 A Twyford, Motor Engineer - - - - - 636093 Youlgrave Garage - - - - - 636943 Youlgrave Parish Council - - - - - -
----------------------------	--

S P O N S O R S

PREPARATIONS FOR THE MILLENNIUM

A meeting was held in Youlgrave Village Hall on Tuesday 17th March. Twenty people attended and many ideas were suggested to commemorate the Millennium in 2000 AD.

Some of the ideas are too expensive to undertake for 2000 but others are possible with sufficient support. There may be European funds available for projects which help sport or tourism.

If you're interested and want a list of the numerous ideas proposed or want to suggest something, let 'The Bugle' know and come to the next meeting.

The next meeting of the 'Millennium Committee' will be held on Monday 11th May, 7.30pm in the Village Hall and every organisation is invited to send two representatives.

The Bugle is sponsored by Youlgrave Parish Council